

# FACT BOOK

2011-2012



Salt Lake  
Community College



STEP AHEAD.

## **ADMINISTRATION**

Cynthia A. Bioteau, Ph.D.  
*President*

Chris Picard, Ph.D.  
*Provost*

Deneece Huftalin, Ph.D.  
*Vice President of Student Services*

Dennis R. Klaus  
*Vice President of Business Services*

Tim Sheehan  
*Vice President of Institutional Advancement*

## **BOARD OF TRUSTEES**

Jesselie B. Anderson, *Chair*

Gail Miller, *Vice Chair*

Clint Ensign

Larry Hancock

Ashok Joshi, Ph.D.

Stanley B. Parrish

Richard R. Tranter

Anna Kay Waddoups

Mike Bird, *Student Association President*

Annie V. Schwemmer, *SLCC Alumni Association President*

# SALT LAKE COMMUNITY COLLEGE 2011-2012 FACT BOOK

INTRODUCTION .....		1
SLCC Vision, Mission, and Strategic Priorities.....		2
<b>TAB A. STUDENT ENROLLMENT</b>		
<b>STEP AHEAD – Student Enrollment</b> .....		3
<b>GRAPH 1</b> Salt Lake Community College Enrollment Trends .....		4
<b>TABLE 1</b> Salt Lake Community College Enrollment Trends .....		5
<b>TABLE 2A</b> Enrollment Summary - Summer Term.....		6
<b>TABLE 2</b> Enrollment by Academic Dept - Summer Term FTE's .....		7
<b>TABLE 3A</b> Enrollment Summary - Fall Semester .....		8
<b>TABLE 3</b> Enrollment by Academic Dept - Fall Semester FTE's .....		9
<b>TABLE 4A</b> Enrollment Summary - Spring Semester .....		10
<b>TABLE 4</b> Enrollment by Academic Dept – Spring Semester FTE's.....		11
<b>TABLE 5</b> 2010-2011 Enrollment by Summer Term - Fall & Spring End of Term (Annualized FTE's).....		12
<b>TABLE 6</b> Enrollment by Academic Dept - Annualized FTE's.....		13
<b>GRAPH 7</b> Student Headcount Enrollment per Credit Hour.....		14
<b>TABLE 7</b> Student Headcount Enrollment per Credit Hour.....		15
<b>TABLE 8</b> Average Credit Hours Taken.....		16
<b>TABLE 9</b> Average Class Size – Fall 2007-2008 to 2011-2012.....		17

**TABLE OF CONTENTS**  
**-Continued-**

**TAB B. STUDENT DEMOGRAPHICS**

<b>STEP AHEAD – DEMOGRAPHICS</b> .....	18
<b>TABLE 10</b> Student Enrollment by Majors .....	19
<b>TABLE 11</b> Student Enrollment by Majors and by Gender .....	20
<b>GRAPH 12</b> Where Students Live by Zip Code .....	21
<b>TABLE 12</b> Where Students Live by Zip Code .....	22
<b>TABLE 13</b> Student Distribution by Age and Gender .....	23
<b>TABLE 14</b> Student Distribution by Racial Background and Gender .....	24
<b>TABLE/ GRAPH 15</b> Male to Female Ratios .....	25
<b>TABLE/ GRAPH 16</b> Veterans Currently Eligible to Receive Benefits by Academic Classification.....	26
<b>TABLE 17</b> Average Age of Students .....	27

**TAB C. FACULTY/STAFF INFORMATION**

<b>STEP AHEAD – FACULTY/STAFF</b> .....	28
<b>TABLE 18</b> 2010-2011 Student/Faculty Ratios .....	29
<b>GRAPH 19</b> Student/Faculty & Student/Staff Ratios - Salt Lake Community College .....	30
<b>TABLE 19</b> Student/Faculty & Student/Staff Ratios - Salt Lake Community College .....	31
<b>TABLE 20</b> Salaried Personnel Budgeted FTE by Index Codes, by Gender, and by Faculty/Staff (Ed and General Indexes) .....	32

**TABLE OF CONTENTS**  
**-Continued-**

**TAB C. FACULTY/STAFF INFORMATION**

<b>TABLE 21</b>	Salaried Personnel Budgeted FTE by Index Codes, by Gender, and by Faculty/Staff (Service Enterprises/Auxiliary, Designated, Restricted, Agency Funds, and Skills Center Funded Indexes) ....	37
<b>TABLE 22</b>	2011-2012 Faculty Information including Tenure, Ranking, Educational Credentials and Male/Female Ratios .....	39

**TAB D. DEGREES AND AWARDS**

<b>STEP AHEAD – DEGREES AND AWARDS</b> .....	40	
<b>TABLE 23</b>	Distribution of Graduates by Degree and by Major .....	41
<b>TABLE 24</b>	Distribution of Graduates by Degree, by Major and by Gender .....	42

**TAB E. FINANCIAL INFORMATION**

<b>STEP AHEAD – FINANCIAL INFORMATION</b> .....	43	
<b>TABLE 25</b>	Current and Historical Tuition and Fee Schedule for Salt Lake Community College .....	44
<b>TABLE 26</b>	Cost Per Student Credit Hour by Department (Instructional Cost) .....	45
<b>TABLE 27</b>	Cost Per FTE by Department (Instructional Cost) .....	46
<b>TABLE 28</b>	Costs Per FTE - Current and Adjusted for Inflation .....	47
<b>TABLE 29</b>	Financial Aid Information .....	48
<b>TABLE/ GRAPH 30</b>	2010-2011 Revenue Sources & Expenditures (E & G) .....	49
<b>TABLE/ GRAPH 31</b>	2010-2011 Revenue Sources & Expenditures (Total) .....	50

**TABLE OF CONTENTS**  
**-Continued-**

**TAB F. FACILITIES**

**STEP AHEAD – FACILITIES** ..... 51

**TABLE/** Building Profile Instructional Buildings  
**GRAPH 32** Taylorsville Redwood Campus ..... 52

**TABLE/** Building Profile  
**GRAPH 33** All Campus Locations ..... 53

**TAB G. STUDENT INPUT**

**STEP AHEAD – STUDENT INPUT** ..... 54

Explanation of Student Follow-Up Systems ..... 55

**TABLE 34** New Student Survey - 2010-2011 Summary ..... 56

**TABLE 35** Non-Returning Survey - 2010-2011 Summary ..... 58

**TABLE 36** Graduating Student Survey - 2010-2011 Summary ..... 60

**TAB H. NON-CREDIT ACTIVITY**

**STEP AHEAD – NON-CREDIT ACTIVITY** ..... 61

School of Applied Technology -  
Mission and Operating Characteristics ..... 62

**TABLE 37** School of Applied Technology Enrollment Trends ..... 63

**TABLE 38** School of Applied Technology Student Demographics ..... 64

**TABLE 39** School of Applied Technology -  
Distribution of Graduates by Program and by Gender ..... 65

**TABLE/** 2010-2011 School of Applied Technology Revenue Sources  
**GRAPH 40** & Expenditures (Total) ..... 66

**TABLE 41** School of Professional and Economic Development -  
Non-Credit Student Enrollment Trends ..... 67

# INTRODUCTION

The purpose of the Fact Book is to provide official information about Salt Lake Community College (SLCC). Where possible, several years of historical data has been presented to provide perspective and to show trends.

It should be noted that given the complexities and size of SLCC and the multiple special databases that are being used, when interpreting data appearing in this book, care should be taken to ensure the database is correct for the purpose for which the data is used. The Fact Book represents the official numbers of Salt Lake Community College.

The organization of the data is as follows:

<b>Tab A.</b>	Student Enrollment
<b>Tab B.</b>	Student Demographics
<b>Tab C.</b>	Faculty/Staff Information
<b>Tab D.</b>	Degrees and Awards
<b>Tab E.</b>	Financial Information
<b>Tab F.</b>	Facilities
<b>Tab G.</b>	Student Input
<b>Tab H.</b>	Non-Credit

The Fact Book was prepared by Debbie Summers from the Office of Institutional Research.

# **SALT LAKE COMMUNITY COLLEGE**

## **VISION STATEMENT**

Salt Lake Community College will be the premier comprehensive community college in the nation.

## **MISSION STATEMENT**

Salt Lake Community College is a public, open-access, comprehensive community college committed to serving the broader community. Its mission is to provide quality higher education and lifelong learning to people of diverse cultures, abilities, and ages, and to serve the needs of community and government agencies, business, industry and employers.

The College fulfills its mission by:

- offering associate degrees, certificate programs, career and technical education, developmental education, transfer education, and workforce training to prepare individuals for career opportunities and an enriched lifetime of learning and growing;
- offering programs and student support services that provide students opportunities to acquire knowledge and critical thinking skills, develop self-confidence, experience personal growth, and value cultural enrichment;
- maintaining an environment committed to teaching and learning, collegiality, and the respectful and vigorous dialogue that nourishes active participation and service in a healthy democracy.

## **STRATEGIC PRIORITIES 2011**

- Enhance Quality Higher Education
- Improve Student Access and Success
- Advance a Culture of Evidence & Accountability
- Strengthen Institutional Support
- Advance Partnerships/Relationships with the Community and Business



**TAB A.**

**Student  
Enrollment**

## **TAB A. STEP AHEAD**

### **STUDENT ENROLLMENT**

Salt Lake Community College has seen a slight decrease in both headcount and FTE (Full-Time Equivalent) throughout the 2011-2012 year. Because of budget reductions and the loss of ARRA funds, the College managed enrollment by limiting the number of class sections offered. SLCC continues to maximize resources to teach and train as many students as possible while maintaining instructional quality.

#### **Fast Facts (Budget Related Figures)**

- Fall 11-12 Headcount = 27,041
- Fall 11-12 FTE = 15,856
- Fall 11-12 Average Credit Hours taken = 8.80
- Fall 11-12 Average Class Size = 20.87

GRAPH 1.

## SALT LAKE COMMUNITY COLLEGE ENROLLMENT TRENDS

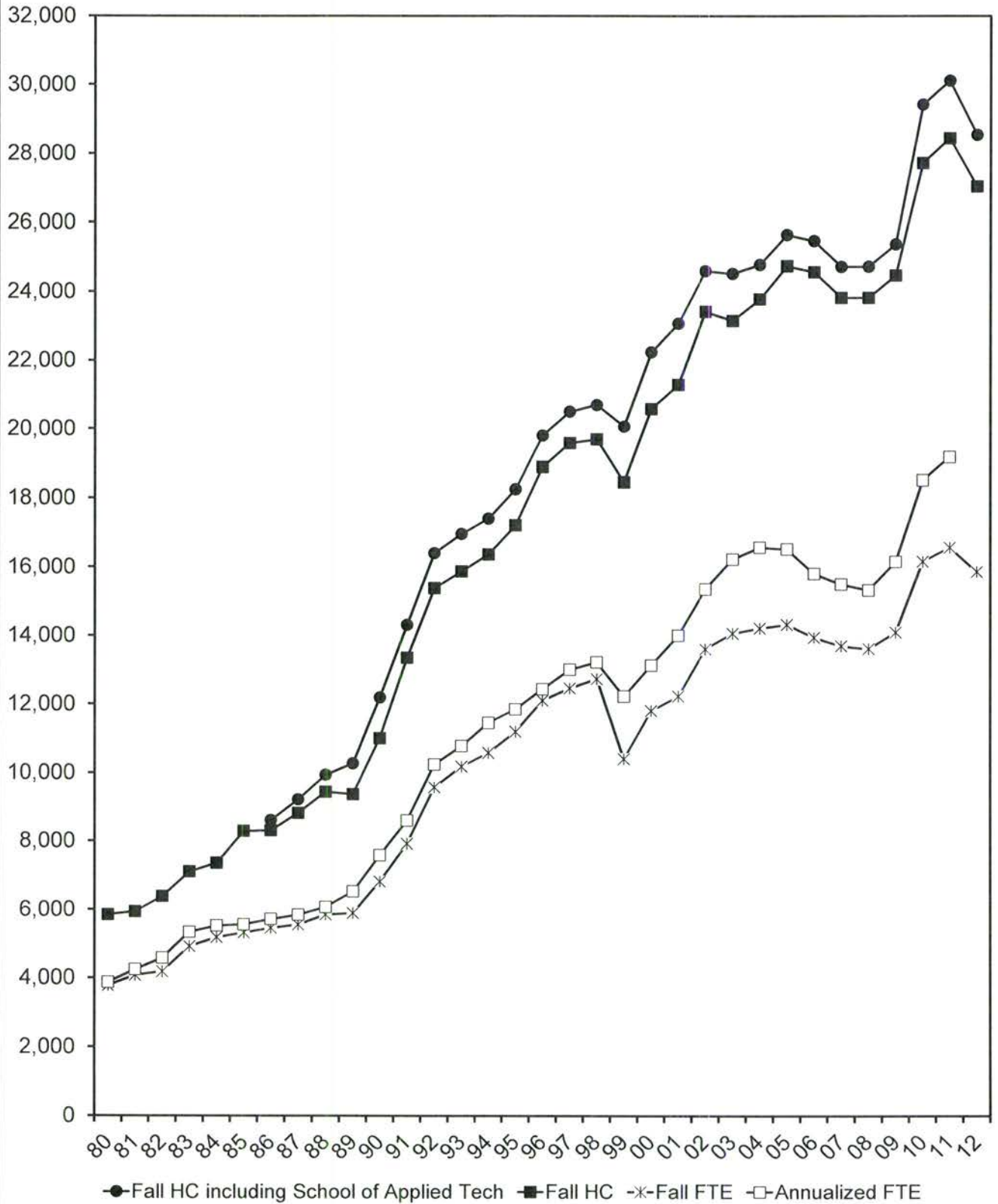


TABLE 1.

SALT LAKE COMMUNITY COLLEGE  
ENROLLMENT TRENDS

YEARS	FALL HEADCOUNT THIRD WEEK			FALL FTE THIRD WEEK			AFTE'S	ANNUALIZED UNDUPLICATED HEADCOUNT
	RESIDENTS	NON- RESIDENTS	TOTAL	RESIDENTS	NON- RESIDENTS	TOTAL		
<b>ACTUALS</b>								
1979-80	5722	126	5848	3638	139	3777	3870	
1980-81	5853	84	5937	3984	91	4075	4238	
1981-82	6313	70	6383	4105	74	4179	4573	12240
1982-83	7045	63	7108	4854	58	4912	5341	13152
1983-84	7308	52	7360	5127	49	5176	5522	14459
1984-85	8244	45	8289	5280	37	5317	5563	13981
1985-86	8243	64	8307	5402	53	5455	5720	13712
1986-87	8756	59	8815	5511	43	5554	5845	13388
* 1987-88	9389	47	9436	5808	40	5848	6073	15297
1988-89	9294	73	9367	5840	53	5893	6530	15769
1989-90	10900	103	11003	6733	86	6819	7584	18843
1990-91	13028	316	13344	7745	173	7918	8596	22256
1991-92	15089	285	15374	9337	232	9569	10243	24794
1992-93	15558	304	15862	9937	243	10180	10775	25018
1993-94	15980	384	16364	10253	322	10575	11449	26365
1994-95	16765	447	17212	10816	378	11194	11846	27956
1995-96	18351	537	18888	11664	432	12096	12431	30643
1996-97	18948	634	19582	11964	488	12452	13002	32652
1997-98	19017	674	19691	12189	542	12731	13216	31816
** 1998-99	17816	637	18453	9949	452	10401	12220	29192
1999-00	19910	673	20583	11304	495	11799	13131	32845
2000-01	20593	701	21294	11718	509	12227	14004	34447
2001-02	22551	863	23414	13011	593	13604	15351	35225
2002-03	22552	602	23154	13689	373	14062	16223	35953
2003-04	22928	849	23777	13624	589	14213	16571	36021
2004-05	23384	1356	24740	13645	675	14320	16520	35757
2005-06	23518	1049	24567	13255	688	13943	15802	35703
2006-07	22671	1151	23822	12954	740	13694	15496	35007
2007-08	22425	1399	23824	12749	861	13610	15322	35410
2008-09	23088	1379	24467	13227	867	14094	16152	36384
2009-10	26510	1213	27723	15341	813	16154	18514	39690
2010-11	27244	1199	28443	15754	813	16567	19179	40348
2011-12	25937	1104	27041	15129	727	15856		

NOTE: \* 1987-88 to 2011-12 actuals are "Budget Related Totals", not the "Institution FTE and HC Totals"

\*\* Semester Conversion

SOURCE: 1979-80 to 1984-85 Utah Board of Regents' Recommended Operating Budgets  
1985-86 to 2011-12 Utah Board of Regents' Official Reports

**TABLE 2A.**  
**SUMMER TERM, 2011-2012**  
**OFFICIAL ENROLLMENT SUMMARY (BUDGET RELATED)**

	<u>AVERAGE</u>	<u>HC</u>	<u>%</u>	<u>FTE</u>	<u>%</u>
2011-12 SUMMER TERM OFFICIAL #S (BUDGET RELATED IPEDS)		13367		6041.0	
2011-12 SUMMER TERM OFFICIAL #S (BUDGET RELATED NON-IPEDS)**					
<b>2011-12 SUMMER TERM OFFICIAL #S (BUDGET RELATED TOTAL)</b>		<b>13367 ***</b>		<b>6041.0</b>	
 2010-11 Summer Term Official #'s & % Completed		13124	101.9%	5876.0	102.8%
 <u>AVERAGE CREDIT HOURS TAKEN</u>					
Resident	6.73	12741	95.3%	5718.0	94.7%
Non-Resident	7.74	626	4.7%	323.0	5.3%
<b>Total</b>	<b>6.78</b>	<b>13367</b>		<b>6041.0</b>	
 <u>AVERAGE AGE OF STUDENTS *</u>					
Resident	27.52				
Non-Resident	27.50				
 <u>MALE TO FEMALE RATIO</u>					
Male		6501	48.6%		
Female		6866	51.4%		
<b>Total</b>		<b>13367</b>			
 <u>WHERE STUDENTS COME FROM</u>					
Salt Lake County		9703	72.6%		
Utah Excluding SL County		3038	22.7%		
US excluding Utah & Foreign Countries		626	4.7%		
<b>Total</b>		<b>13367</b>			
 <u>LEVELS OF STUDENTS</u>					
First Time Freshmen		1556	11.6%		
Other Freshmen		1646	12.3%		
Sophomores		10165	76.1%		
<b>Total</b>		<b>13367</b>			

\* Age is not a completely accurate figure in that some students choose not to release this information.

\*\* Budget Related Non-IPEDS = Budget Related Non-Credit STIT

\*\*\* Budget Related Total Headcount will not match Budget Related IPEDS & Non-IPEDS subtotals.

A student is only counted once in the Budget Related Total. A student in both Budget Related types is counted in both.

**TABLE 2.**

**ENROLLMENT BY ACADEMIC DEPARTMENT - SUMMER TERM FTE'S**

<b>DEPARTMENT</b>	<b>07-08</b>	<b>08-09</b>	<b>09-10</b>	<b>10-11</b>	<b>11-12</b>
Accounting	57.5	54.7	62.3	82.7	99.4
Apprenticeship/Carpentry-Millwright			0.3		
Apprenticeship/Culinary Arts	9.4	18.9	0.4		
Apprenticeship/Electricity-Instrumentation	33.2	35.2	18.0	15.0	8.3
Apprenticeship/General	2.6	8.0	7.1	6.4	3.8
Apprenticeship/HVAC		0.3		0.3	
Apprenticeship/Ironworkers	4.0				
Apprenticeship/Plumbers-Pipefitters	19.9	11.3	7.3	2.0	0.7
Apprenticeship/Stage Hands				3.0	0.3
Architectural Tech	6.6	4.2	8.7	14.0	12.5
Architectural Tech (Prison)		13.6	5.7		
ASL/Interpreting	15.9	15.0	19.7	16.3	12.4
Automotive Technician					14.0
Automotive Technician (Prison)	16.0	8.8	7.6		
Aviation Technology/Aviation Maintenance Tech	20.3	15.5	13.9	34.9	51.3
Aviation Technology/Professional Pilot	6.3	6.1	9.3	15.3	20.3
Barbering/Cosmetology	139.5	171.6	137.8	130.9	114.6
Biology	270.8	268.4	331.2	434.0	346.5
Biotechnology	1.4	6.7	1.7	5.3	0.7
Bldg Construction (Prison)	41.4	44.1	5.4		
Bldg Construction/Construction Mgt	14.1	4.2	5.4	8.9	12.1
Business Economics	105.6	97.6	109.4	140.8	121.6
Business Management	96.1	108.2	125.6	152.7	127.8
Chemistry	225.1	214.4	261.4	291.6	241.1
Communication	140.2	151.7	185.7	208.4	210.5
Computer Info Systems	135.4	164.3	165.6	218.8	246.8
Computer Science	29.1	31.5	33.5	43.1	57.6
Criminal Justice	81.1	76.7	115.9	154.2	173.3
Culinary Arts			31.7	52.3	36.9
Culinary Arts (Prison)	16.7	31.3	11.3		
Dental Hygiene		1.0	1.2		
Developmental Education	315.1	417.4	512.6	664.4	723.3
Diesel Systems Technology	1.7				
Education	7.4	15.3	24.4	29.8	35.2
Electrical & Instrumentation Tech	7.6				
Electronics	4.2				
Electronics & Instrumentation Tech		26.8	17.6	6.2	
Electronics (Prison)	23.2	30.4			
Engineering	48.6	40.9	37.3	61.1	74.3
Engineering Design/Drafting Tech	15.4	10.8	16.8	12.6	17.4
Engineering Design/Drafting Tech (Prison)		1.6			
Engineer Des/Draft Tech/Arch Tech (Prison)	32.0				
English	322.6	364.1	386.3	452.0	499.7
English Second Language	29.1	35.1	38.2	33.6	40.1
Environmental Technology	10.1	7.1	7.0	4.8	
Family & Human Studies	26.4	38.4	38.1	46.8	42.0
Fashion Institute		8.2	11.2	19.5	16.0
Finance and Credit	39.6	34.0	33.1	50.5	53.7
Fine Arts	147.5	154.3	172.7	205.2	228.0
Geosciences	55.9	48.0	71.9	91.5	91.7
Health & Lifetime Activities	171.2	205.2	237.3	298.9	357.9
History/Anthropology	121.2	119.8	131.8	156.2	203.2
Humanities	87.2	110.5	145.8	171.6	196.4
Interior Design		13.6	9.8	17.4	12.9
Languages	45.1	41.4	40.3	40.1	59.6
Marketing	12.3	8.4	16.6	23.0	25.1
Mathematics	460.3	475.6	577.2	672.0	648.9
Medical Assistant	29.7	38.9	62.0	90.8	71.5
Medical Lab Technology	10.0	1.0			
Nursing	20.5	27.8	22.7	27.4	19.3
Occupational Therapy Asst	4.7	3.5	3.6	3.3	4.1
Paralegal Studies	35.4	32.7	34.6	40.1	49.1
Physical Therapist Asst	18.0	14.7	15.3	14.7	14.0
Physics	94.9	88.5	94.0	99.0	88.1
Political Science	40.9	38.6	41.3	52.3	50.3
Psychology	114.8	125.0	152.0	166.4	197.7
Radiologic Technology	28.2	20.4	26.4	20.9	24.1
Social Work	9.8	8.8	15.6	16.6	21.2
Sociology	71.6	66.0	74.8	77.4	66.8
Surgical Technology	3.2	3.2	4.4	3.2	2.8
Surveying		0.8		2.8	1.8
Telecommunications	14.2				
Visual Art & Design	89.3	107.3	116.6	158.3	169.9
Visual Art & Design (Prison)	9.5	7.0			
Welding	7.4	8.6	11.6	14.7	22.4
<b>Total</b>	<b>4074.0</b>	<b>4363.0</b>	<b>4884.0</b>	<b>5876.0</b>	<b>6041.0</b>

NOTE: Index code (ACBSSP) is included in the different departments.

SOURCE: Official End of Term Enrollment Summary by Departments, 2007-2008 to 2011-2012

**TABLE 3A.**  
**FALL SEMESTER, 2011-2012**  
**OFFICIAL ENROLLMENT SUMMARY (BUDGET RELATED)**

	<u>AVERAGE</u>	<u>HC</u>	<u>%</u>	<u>FTE</u>	<u>%</u>
2011-12 FALL SEMESTER OFFICIAL #'S (BUDGET RELATED IPEDS)		26937		15856.0	
2011-12 FALL SEMESTER OFFICIAL #'S (BUDGET RELATED NON-IPEDS)**		156			
<b>2011-12 FALL SEMESTER OFFICIAL #'S (BUDGET RELATED TOTAL)</b>		<b>27041 ***</b>		<b>15856.0</b>	
2010-11 Fall Semester Official #'s & % Completed		28443	95.1%	16567.0	95.7%
<u>AVERAGE CREDIT HOURS TAKEN</u>					
Resident	8.75	25937	95.9%	15129.0	95.4%
Non-Resident	9.88	1104	4.1%	727.0	4.6%
<b>Total</b>	<b>8.80</b>	<b>27041</b>		<b>15856.0</b>	
<u>AVERAGE AGE OF STUDENTS *</u>					
Resident	25.64				
Non-Resident	25.62				
<u>MALE TO FEMALE RATIO</u>					
Male		13404	49.6%		
Female		13637	50.4%		
<b>Total</b>		<b>27041</b>			
<u>WHERE STUDENTS COME FROM</u>					
Salt Lake County		19974	73.9%		
Utah Excluding SL County		5963	22.1%		
US Excluding Utah/Foreign Countries		1104	4.0%		
<b>Total</b>		<b>27041</b>			
<u>LEVELS OF STUDENTS</u>					
First Time Freshmen		3926	14.5%		
Other Freshmen		5627	20.8%		
Sophomores		17488	64.7%		
<b>Total</b>		<b>27041</b>			

\* Age is not a completely accurate figure in that some students choose not to release this information.

\*\* Budget Related Non-IPEDS = Budget Related Non-Credit STIT

\*\*\* Budget Related Total Headcount will not match Budget Related IPEDS & Non-IPEDS subtotals.

A student is only counted once in the Budget Related Total. A student in both Budget Related types is counted in both.

**TABLE 3.**

**ENROLLMENT BY ACADEMIC DEPARTMENT - FALL SEMESTER FTE'S**

DEPARTMENT	07-08	08-09	09-10	10-11	11-12
Accounting	223.5	208.4	208.3	244.7	252.4
Apprenticeship/Carpentry-Millwright	60.3	45.0	8.3	3.0	
Apprenticeship/Culinary Arts	50.1	64.8	1.3		
Apprenticeship/Electricity-Instrumentation	141.2	140.3	102.9	76.3	69.3
Apprenticeship/General	37.3	33.6	17.3	16.2	6.9
Apprenticeship/HVAC	12.7	13.3	10.3	9.7	5.7
Apprenticeship/Ironworkers	4.0				
Apprenticeship/Lineman			25.7	16.7	
Apprenticeship/Plumbers-Pipefitters	201.1	186.3	160.5	117.5	84.1
Apprenticeship/Stage Hands	6.7	6.7	4.7	9.3	7.3
Architectural Tech	90.9	83.7	84.4	83.1	71.2
Architectural Tech (Prison)		38.6			
ASL/Interpreting	81.0	77.4	97.2	75.4	61.0
Automotive Collision Repair & Painting	16.0	25.6	29.6	25.6	30.7
Automotive Technician	57.9	70.4	109.7	123.9	111.2
Automotive Technician (Prison)	40.8	26.4			
Aviation Technology/Aviation Maintenance Tech	65.9	59.7	74.4	102.9	115.0
Aviation Technology/Professional Pilot	40.1	43.3	50.6	68.7	65.1
Barbering/Cosmetology	390.1	340.3	230.1	219.8	217.3
Biology	836.8	861.7	1022.4	1008.3	969.3
Biotechnology	18.9	13.8	16.5	22.3	31.9
Bldg Construction/Construction Mgt	79.5	57.1	53.0	64.1	57.4
Bldg Construction (Prison)	79.2	56.3			
Business Economics	234.6	239.2	249.0	295.6	257.6
Business Management	334.6	350.6	346.1	374.5	315.3
Chemistry	445.0	429.2	486.5	460.1	398.3
Communication	548.9	585.0	653.4	756.0	694.2
Computer Info Systems	556.2	576.3	645.9	718.8	684.5
Computer Science	60.0	79.2	113.3	129.5	142.8
Criminal Justice	180.2	173.6	255.3	310.4	340.4
Culinary Arts			88.0	127.0	106.6
Culinary Arts (Prison)	31.2	24.4			
Dental Hygiene	40.8	47.9	51.2	36.0	27.9
Developmental Education	1247.8	1489.7	1968.6	1847.2	1773.6
Diesel Systems Technology	18.6	13.8	30.4	44.6	40.1
Education	56.5	64.4	97.3	134.7	123.7
Electrical & Instrumentation Tech	22.1				
Electronics	23.8				
Electronics & Instrumentation Tech		48.1	25.4	6.8	
Electronics (Prison)	24.0	28.7			
Engineering	95.7	77.2	106.3	122.3	150.4
Engineering Design/Drafting Tech	75.3	49.2	56.9	64.1	69.1
Engineering Design/Drafting Tech (Prison)		2.0			
Engineer Des/Draft Tech/Arch Tech (Prison)	46.9				
English	809.3	809.7	1142.7	869.3	891.9
English Second Language	78.5	78.1	88.3	70.7	75.5
Environmental Technology	19.0	19.8	18.5	11.2	
Family & Human Studies	138.7	179.1	238.1	292.1	201.7
Fashion Institute		51.5	86.7	99.6	116.5
Finance and Credit	144.8	136.9	141.9	162.6	144.5
Fine Arts	456.4	485.2	552.9	673.6	635.6
Geosciences	200.2	195.3	220.3	240.7	222.8
Health & Lifetime Activities	498.9	562.5	635.6	745.4	738.2
History/Anthropology	520.6	523.6	581.0	642.6	568.7
Humanities	461.1	466.9	486.2	499.6	559.3
Interior Design		57.7	58.7	73.3	80.3
Languages	250.1	239.1	250.0	269.0	275.3
Marketing	68.9	54.8	83.0	109.2	95.2
Mathematics	1165.1	1259.9	1487.9	1423.8	1445.5
Medical Assistant	73.7	86.1	146.0	154.1	98.8
Medical Lab Technology	1.5				
Non-Destructive Testing Tech	17.4	19.7	23.6	24.0	23.7
Nursing	185.7	212.0	236.1	225.3	232.9
Occupational Therapy Asst	40.0	32.2	35.6	38.7	39.2
Paralegal Studies	76.8	81.0	104.2	120.2	114.4
Physical Therapist Asst	53.6	57.5	63.4	59.2	61.4
Physics	223.6	218.5	255.2	251.0	238.5
Political Science	143.0	142.7	155.5	179.1	160.6
Psychology	476.1	476.7	576.3	561.1	527.7
Radiologic Technology	74.8	69.3	67.7	65.5	57.1
Social Work	72.1	66.4	71.9	99.0	92.1
Sociology	242.2	231.4	261.1	280.6	265.4
Surgical Technology	17.6	21.2	21.6	22.1	32.1
Surveying		33.8	26.2	21.8	23.6
Telecommunications	39.0				
Visual Art & Design	435.1	438.5	482.0	495.9	479.1
Visual Art & Design (Prison)	7.9	9.8			
Welding	42.1	45.9	75.0	71.6	78.1
<b>COLLEGE GRAND TOTALS</b>	<b>13610.0</b>	<b>14094.0</b>	<b>16154.0</b>	<b>16567.0</b>	<b>15856.0</b>

NOTE: Index code (ACBSSP) is included in the different departments.

SOURCE: Official Third Week Enrollment Summary by Departments, 2007-2008 to 2011-2012



**TABLE 4A.**  
**SPRING SEMESTER, 2011-2012**  
**OFFICIAL ENROLLMENT SUMMARY (BUDGET RELATED)**

	<u>AVERAGE</u>	<u>HC</u>	<u>%</u>	<u>FTE</u>	<u>%</u>
2011-12 SPRING SEMESTER OFFICIAL #'S (BUDGET RELATED IPEDS)		26900		15815.0	
2011-12 SPRING SEMESTER OFFICIAL #'S (BUDGET RELATED NON-IPEDS)**		175			
<b>2011-12 SPRING SEMESTER OFFICIAL #'S (BUDGET RELATED TOTAL)</b>		<b>27022 ***</b>		<b>15815.0</b>	
 2010-11 Spring Semester Official #'s & % Completed		 27271	 99.1%	 16052.0	 98.5%
 <u>AVERAGE CREDIT HOURS TAKEN</u>					
Resident	8.73	26050	96.4%	15165.0	95.9%
Non-Resident	10.03	972	3.6%	650.0	4.1%
<b>Total</b>	<b>8.78</b>	<b>27022</b>		<b>15815.0</b>	
 <u>AVERAGE AGE OF STUDENTS *</u>					
Resident	26.16				
Non-Resident	26.20				
 <u>MALE TO FEMALE RATIO</u>					
Male		13612	50.4%		
Female		13410	49.6%		
<b>Total</b>		<b>27022</b>			
 <u>WHERE STUDENTS COME FROM</u>					
Salt Lake County		19904	73.7%		
Utah Excluding SL County		6146	22.7%		
US Excluding Utah & Foreign Countries		972	3.6%		
<b>Total</b>		<b>27022</b>			
 <u>LEVELS OF STUDENTS</u>					
First Time Freshmen		2076	7.7%		
Other Freshmen		6382	23.6%		
Sophomores		18564	68.7%		
<b>Total</b>		<b>27022</b>			

\* Age is not a completely accurate figure in that some students choose not to release this information.

\*\* Budget Related Non-IPEDS = Budget Related Non-Credit STIT

\*\*\* Budget Related Total Headcount will not match Budget Related IPEDS & Non-IPEDS subtotals.

A student is only counted once in the Budget Related Total. A student in both Budget Related types is counted in both.

TABLE 4.

## ENROLLMENT BY ACADEMIC DEPARTMENT - SPRING SEMESTER FTE'S

DEPARTMENT	07-08	08-09	09-10	10-11	11-12
Accounting	230.0	207.2	230.0	243.8	251.7
Apprenticeship/Carpentry-Millwright	49.0	11.0	35.3	27.3	20.0
Apprenticeship/Culinary Arts	48.4	58.0			
Apprenticeship/Electricity-Instrumentation	147.1	117.4	94.3	78.3	69.7
Apprenticeship/General	28.1	31.9	7.9	9.1	8.8
Apprenticeship/HVAC	10.0	11.7	8.7	7.3	6.0
Apprenticeship/Ironworkers	3.3				
Apprenticeship/Lineman			22.3	18.3	20.3
Apprenticeship/Plumbers-Pipefitters	220.2	178.3	142.5	115.7	75.1
Apprenticeship/Stage Hands	1.3	4.0	5.0	6.3	5.7
Architectural Tech	80.3	72.3	75.7	73.9	53.3
Architectural Tech (Prison)		23.8			
ASL/Interpreting	81.4	87.0	102.6	75.3	66.3
Automotive Collision Repair & Painting	16.3	21.3	26.4	26.5	34.3
Automotive Technician	43.9	59.8	113.1	111.8	110.8
Automotive Technician (Prison)	43.6	28.0			
Aviation Technology/Aviation Maintenance Tech	58.5	56.1	91.5	115.9	136.4
Aviation Technology/Professional Pilot	46.6	35.0	54.0	64.3	56.4
Barbering/Cosmetology	367.8	323.0	255.8	225.3	200.0
Biology	839.6	862.3	1116.9	1037.8	1023.3
Biotechnology	13.5	15.6	27.7	25.1	26.5
Bldg Construction/Construction Mgt	64.9	56.3	50.6	58.7	50.7
Bldg Construction (Prison)	90.1	60.7			
Business Economics	234.2	238.6	257.4	269.2	243.8
Business Management	338.1	345.0	348.9	344.3	323.0
Chemistry	406.8	442.5	453.8	441.5	431.5
Communication	466.7	523.4	623.7	705.4	708.7
Computer Info Systems	517.0	541.9	624.3	625.8	593.5
Computer Science	59.1	89.5	127.6	153.5	168.8
Criminal Justice	175.7	208.5	282.0	319.9	278.7
Culinary Arts			101.2	109.3	97.9
Culinary Arts (Prison)	38.3	32.2			
Dental Hygiene	36.7	45.0	46.7	32.9	25.0
Developmental Education	1039.6	1415.6	1754.1	1667.8	1741.6
Diesel Systems Technology	19.0	14.5	28.4	41.5	44.1
Education	57.1	83.3	117.0	125.4	127.9
Electrical & Instrumentation Tech	25.7				
Electronics	24.4				
Electronics & Instrumentation Tech		36.8	15.9	7.9	
Electronics (Prison)	26.3	9.2			
Engineering	92.1	97.8	114.8	146.5	164.8
Engineering Design/Drafting Tech	75.4	41.3	60.3	63.9	61.9
Engineering Design/Drafting Tech (Prison)		5.6			
Engineer Des/Draft Tech/Arch Tech (Prison)	59.1				
English	803.2	874.6	1155.8	941.7	1008.2
English Second Language	71.2	75.3	70.0	71.1	72.8
Environmental Technology	13.4	19.9	17.3	14.0	
Family & Human Studies	124.6	132.1	162.2	176.8	148.9
Fashion Institute	42.5	62.9	85.0	94.9	109.3
Finance and Credit	137.7	127.1	133.7	121.3	143.6
Fine Arts	471.1	486.5	572.2	684.6	674.4
Geosciences	163.1	185.6	223.3	245.5	264.9
Health & Lifetime Activities	505.5	591.1	693.9	772.7	705.1
History/Anthropology	473.5	520.8	585.1	640.4	648.8
Humanities	410.2	449.0	512.4	551.0	499.0
Interior Design	46.2	49.1	53.7	70.7	66.6
Languages	210.2	219.1	255.8	258.5	208.5
Marketing	62.4	64.2	78.6	88.6	84.2
Mathematics	1065.0	1257.6	1511.4	1408.6	1428.1
Medical Assistant	74.9	93.5	145.6	112.1	117.7
Medical Lab Technology	0.3				
Mortuary Science					9.3
Non-Destructive Testing Tech	20.3	15.9	22.3	16.2	16.0
Nursing	189.6	220.3	203.2	223.7	221.2
Occupational Therapy Asst	39.6	37.5	35.6	41.2	46.7
Paralegal Studies	79.8	79.7	104.4	109.7	104.6
Physical Therapist Asst	36.6	39.2	41.7	41.0	35.2
Physics	236.9	247.6	284.6	285.7	257.7
Political Science	144.4	151.8	152.2	157.8	154.7
Psychology	397.7	452.1	559.7	548.2	535.1
Radiologic Technology	68.3	65.9	61.7	65.0	58.6
Social Work	74.5	66.1	73.9	87.9	86.4
Sociology	232.6	223.4	237.2	261.8	246.6
Surgical Technology	11.2	12.9	12.8	11.2	12.0
Surveying		27.3	25.7	22.3	23.4
Telecommunications	31.7				
Visual Art & Design	371.5	440.1	482.6	481.0	523.4
Visual Art & Design (Prison)	3.8	4.7			
Welding	34.3	47.7	73.0	71.3	77.5
<b>TOTAL</b>	<b>12823.0</b>	<b>13832.0</b>	<b>16043.0</b>	<b>16052.0</b>	<b>15815.0</b>

NOTE: Index Code (ACBSSP) is included in the different departments.

SOURCE: Official Third Week Enrollment Summary by Departments, 2007-2008 to 2011-2012

**TABLE 5.**

**2010-2011 ENROLLMENT BY ACADEMIC DEPARTMENT - ANNUALIZED FTE'S**

<b>DEPARTMENT</b>	<b>SUMMER END OF TERM 2010-2011</b>	<b>FALL END OF TERM 2010-2011</b>	<b>SPRING END OF TERM 2010-2011</b>	<b>ANNUALIZED FTE'S (AFTE'S) 2010-2011</b>
Accounting	82.7	239.3	243.8	282.8
Apprenticeship/Carpentry-Millwright		3.0	27.3	15.2
Apprenticeship/Electricity-Instrumentation	15.0	75.7	78.3	84.5
Apprenticeship/General	6.4	16.2	9.8	16.2
Apprenticeship/HVAC	0.3	10.0	8.0	9.2
Apprenticeship/Lineman		17.3	18.3	17.8
Apprenticeship/Plumbers-Pipefitters	2.0	117.8	116.5	118.2
Apprenticeship/Stage Hands	3.0	9.3	6.7	9.5
Architectural Tech	14.0	81.6	72.5	84.1
ASL/Interpreting	16.3	75.7	74.9	83.5
Automotive Collision Repair & Painting		25.6	26.5	26.1
Automotive Technician		120.8	109.6	115.2
Aviation Technology/Aviation Maintenance Tech	34.9	105.1	117.5	128.8
Aviation Technology/Professional Pilot	15.3	69.5	62.3	73.6
Barbering/Cosmetology	130.9	218.1	225.3	287.1
Biology	434.0	993.9	1033.6	1230.8
Biotechnology	5.3	21.7	24.9	26.0
Bldg Construction/Construction Mgt	8.9	63.0	58.7	65.3
Business Economics	140.8	299.0	269.2	354.4
Business Management	152.7	373.5	345.1	435.6
Chemistry	291.6	449.7	440.9	591.1
Communication	208.4	748.1	701.1	828.5
Computer Info Systems	218.8	717.3	624.2	780.1
Computer Science	43.1	124.0	155.2	161.2
Criminal Justice	154.2	307.4	317.5	389.5
Culinary Arts	52.3	126.6	106.5	142.7
Dental Hygiene		36.0	32.9	34.5
Developmental Education	664.4	1818.9	1673.8	2078.6
Diesel Systems Technology		45.7	40.8	43.3
Education	29.8	132.4	125.0	143.6
Electronics and Instrumentation Tech	6.2	6.8	7.7	10.4
Engineering	61.1	120.4	147.0	164.3
Engineering Design/Drafting Tech	12.6	63.0	63.1	69.4
English	452.0	856.5	941.7	1125.1
English Second Language	33.6	72.1	69.7	87.7
Environmental Technology	4.8	11.0	13.8	14.8
Family & Human Studies	46.8	311.8	176.8	267.6
Fashion Institute	19.5	99.4	94.0	106.5
Finance and Credit	50.5	161.7	123.5	167.8
Fine Arts	205.2	671.3	682.1	779.3
Geosciences	91.5	239.8	246.9	289.1
Health & Lifetime Activities	298.9	737.9	769.2	903.0
History/Anthropology	156.2	636.3	635.2	713.8
Humanities	171.6	493.2	548.8	606.8
Interior Design	17.4	71.4	70.0	79.4
Languages	40.1	261.8	253.7	277.8
Marketing	23.0	107.4	88.4	109.4
Mathematics	672.0	1405.3	1402.5	1739.9
Medical Assistant	90.8	155.0	117.5	181.6
Non-Destructive Testing Tech		24.0	17.0	20.5
Nursing	27.4	224.1	223.0	237.2
Occupational Therapy Asst	3.3	38.7	40.4	41.2
Paralegal Studies	40.1	118.6	109.9	134.3
Physical Therapist Asst	14.7	58.1	40.6	56.7
Physics	99.0	248.5	284.6	316.1
Political Science	52.3	180.9	157.7	195.5
Psychology	166.4	562.4	543.7	636.3
Radiologic Technology	20.9	65.5	65.0	75.7
Short-Term Intensive Training		16.0	18.0	17.0
Social Work	16.6	98.2	88.6	101.7
Sociology	77.4	281.0	260.8	309.6
Surgical Technology	3.2	25.2	10.4	19.4
Surveying	2.8	22.2	22.7	23.9
Visual Art & Design	158.3	493.8	476.3	564.1
Welding	14.7	70.5	73.0	79.1
<b>COLLEGE GRAND TOTALS</b>	<b>5876.0</b>	<b>16452.0</b>	<b>16030.0</b>	<b>19179.0</b>

SOURCE: Official Enrollment Summary by Departments, Summer, Fall, & Spring End of Term, 2010-2011

TABLE 6.

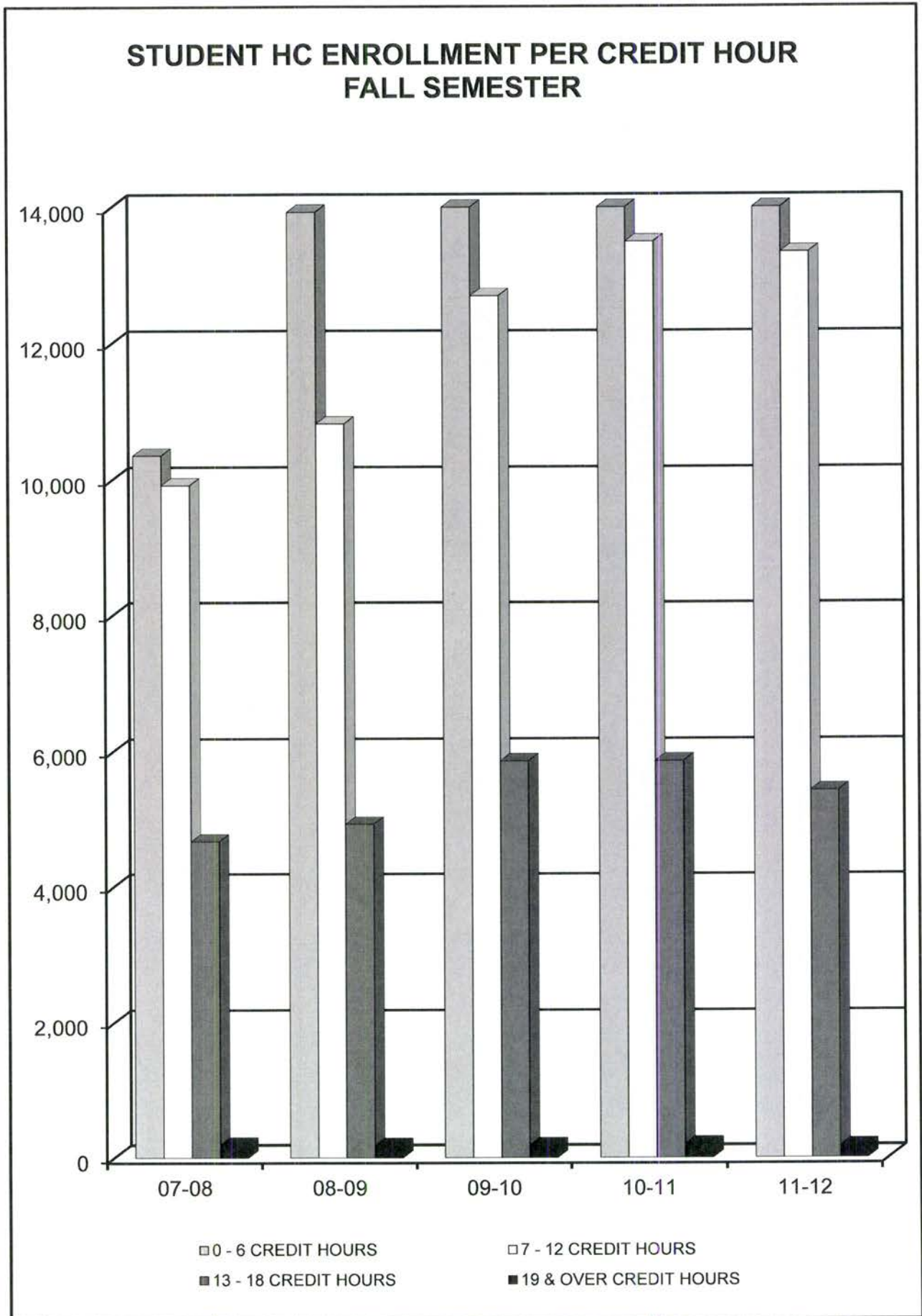
## ENROLLMENT BY ACADEMIC DEPARTMENT - ANNUALIZED FTE'S

DEPARTMENT	2006-2007	2007-2008	2008-2009	2009-2010	2010-2011
Accounting	255.1	250.6	232.9	247.7	282.8
Apprenticeship/Carpentry-Millwright	36.0	54.2	28.0	22.0	15.2
Apprenticeship/Culinary Arts	43.1	54.6	76.1	1.0	
Apprenticeship/Electricity-Instrumentation	131.3	160.5	146.7	107.8	84.5
Apprenticeship/General	63.7	68.0	36.7	17.6	16.2
Apprenticeship/HVAC	11.3	11.4	12.7	9.5	9.2
Apprenticeship/Ironworkers	6.0	5.7			
Apprenticeship/Lineman				24.0	17.8
Apprenticeship/Machinist	1.0				
Apprenticeship/Plumbers-Pipefitters	209.0	225.0	197.4	155.6	118.2
Apprenticeship/Stage Hands	7.4	5.7	5.4	5.9	9.5
Architectural Tech	88.3	87.8	79.4	83.5	84.1
Architectural Tech (Prison)			34.3	2.9	
ASL/Interpreting	118.2	87.4	89.0	112.0	83.5
Automotive Collision Repair & Painting	18.2	16.6	22.9	29.0	26.1
Automotive Technician	52.2	50.6	66.2	107.3	115.2
Automotive Technician (Prison)	40.4	39.0	33.4	3.8	
Aviation Technology/Aviation Maintenance Tech	74.7	71.4	66.3	91.3	128.8
Aviation Technology/Professional Pilot	32.7	46.5	42.6	57.2	73.6
Barbering/Cosmetology	399.5	447.3	421.8	309.2	287.1
Biology	1153.4	963.5	984.4	1224.6	1230.8
Biotechnology	28.5	16.9	17.9	23.1	26.0
Bldg Construction/Construction Mgt	83.2	79.6	61.3	55.0	65.3
Bldg Construction (Prison)	90.5	92.8	79.6	2.7	
Business Economics	289.7	285.7	285.8	306.9	354.4
Business Management	421.2	382.0	399.5	408.7	435.6
Chemistry	515.9	531.7	540.5	597.3	591.1
Communication	593.8	574.8	625.0	731.8	828.5
Computer Info Systems	597.7	594.0	634.8	714.2	780.1
Computer Science	74.8	73.6	100.9	134.8	161.2
Criminal Justice	231.1	218.1	228.9	324.2	389.5
Culinary Arts				109.2	142.7
Culinary Arts (Prison)	20.4	45.2	47.7	5.7	
Dental Hygiene	40.9	39.0	46.8	50.1	34.5
Developmental Education	1335.3	1293.0	1656.0	2118.7	2078.6
Diesel Systems Technology	17.4	19.5	15.4	30.2	43.3
Education	55.5	59.8	80.5	118.5	143.6
Electrical & Instrumentation Tech	25.9	27.8			
Electronics	22.1	26.0			
Electronics & Instrumentation Tech			55.6	29.2	10.4
Electronics (Prison)	27.1	35.1	30.9		
Engineering	111.9	117.5	107.7	129.3	164.3
Engineering Design/Drafting Tech	80.0	83.1	51.2	67.3	69.4
Engineering Design/Drafting Tech (Prison)			3.6		
Engineer Des/Draft Tech/Arch Tech (Prison)	68.1	64.9			
English	948.1	955.7	1017.9	1331.3	1125.1
English Second Language	76.9	90.3	96.1	97.4	87.7
Environmental Technology	28.8	21.3	23.3	21.4	14.8
Family & Human Studies	202.3	221.5	205.4	232.4	267.6
Fashion Institute		45.0	61.0	91.2	106.5
Finance and Credit	181.4	159.4	149.1	153.3	167.8
Fine Arts	496.1	536.0	563.9	653.0	779.3
Geosciences	209.6	208.8	214.3	259.0	289.1
Health & Lifetime Activities	655.9	584.6	675.0	781.5	903.0
History	440.8				
History/Anthropology		554.3	577.9	647.4	713.8
Humanities	516.7	477.4 *	514.7 *	572.2 *	606.8 *
Interior Design		53.4	59.8	61.2	79.4
Languages	270.9	251.7	246.2	269.1	277.8
Marketing	79.4	70.5	63.3	89.0	109.4
Mathematics	1386.9	1330.9	1484.5	1774.4	1739.9
Medical Assistant	107.7	95.0	117.2	176.6	181.6
Medical Lab Technology	12.2	5.9	0.5		
Non-Destructive Testing Tech	14.0	18.4	17.0	23.0	20.5
Nursing	201.3	197.6	228.9	232.9	237.2
Occupational Therapy Asst	35.6	42.6	39.1	37.7	41.2
Paralegal Studies	96.1	95.0	96.5	121.0	134.3
Physical Therapist Asst	72.5	54.2	52.9	59.4	56.7
Physics	287.2	277.3	275.6	317.3	316.1
Political Science	168.5	161.6	165.4	173.3	195.5
Psychology	531.9	489.3	521.5	640.6	636.3
Radiologic Technology	82.6	85.1	78.2	77.4	75.7
Short-Term Intensive Training	21.0	18.5	21.5	22.0	17.0
Social Work	59.3	78.4	70.8	80.5	101.7
Sociology	268.4	270.7	258.3	283.9	309.6
Surgical Technology	20.1	19.0	18.7	19.4	19.4
Surveying			31.0	26.4	23.9
Telecommunications	56.1	46.2			
Visual Art & Design	439.8	447.8	501.4	540.1	564.1
Visual Art & Design (Prison)	13.0	11.3	10.5		
Welding	42.4	40.9	48.3	79.9	79.1
<b>COLLEGE GRAND TOTALS</b>	<b>15496.0</b>	<b>15321.5</b>	<b>16151.5</b>	<b>18514.0</b>	<b>19179.0</b>

NOTE: \* Anthropology courses are included in the History/Anthropology department starting 2007-2008.

SOURCE: Official Enrollment Summary by Departments, 2006-2007 to 2010-2011

GRAPH 7.



**TABLE 7.**  
**STUDENT HEADCOUNT ENROLLMENT PER CREDIT HOUR**  
**FALL HEADCOUNT**

Credit Hours	2007-2008		2008-2009		2009-2010		2010-2011		2011-2012	
	HC	% of Total	HC	% of Total	HC	% of Total	HC	% of Total	HC	% of Total
0 - 3	4057	16.14%	6563	21.97%	6993	20.71%	6291	18.51%	6031	18.19%
4 - 6	6303	25.07%	7368	24.67%	8040	23.80%	8141	23.96%	8195	24.71%
7 - 9	5049	20.08%	5557	18.61%	6317	18.70%	6584	19.37%	6617	19.95%
10 - 12	4872	19.38%	5265	17.63%	6383	18.90%	6909	20.33%	6721	20.26%
13 - 15	3565	14.18%	3825	12.81%	4483	13.27%	4626	13.61%	4275	12.89%
16 - 18	1107	4.40%	1108	3.71%	1374	4.07%	1233	3.63%	1151	3.47%
19 - 21	169	0.67%	161	0.54%	175	0.52%	186	0.55%	163	0.49%
Over 21	22	0.08%	19	0.06%	9	0.03%	13	0.04%	14	0.04%
<b>Total</b>	<b>25144</b>		<b>29866</b>		<b>33774</b>		<b>33983</b>		<b>33167</b>	

NOTE: Totals = Institution Grand Totals

SOURCE: Utah Board of Regents' Official Reports, Fall Semester, 2007-2008 to 2011-2012

**TABLE 8.**

**SALT LAKE COMMUNITY COLLEGE  
AVERAGE CREDIT HOURS TAKEN**

	<b>RESIDENTS</b>	<b>NON-RESIDENTS</b>	<b>TOTAL</b>
<b>SUMMER TERM</b>			
1998-99	8.15	12.49	8.39
1999-00	5.16	7.43	5.29
2000-01	5.69	7.37	5.78
2001-02	5.92	7.75	6.04
2002-03	6.26	7.33	6.32
2003-04	6.44	7.42	6.49
2004-05	6.47	7.56	6.53
2005-06	6.32	7.59	6.40
2006-07	6.22	7.38	6.29
2007-08	6.14	6.96	6.19
2008-09	6.22	7.32	6.30
2009-10	6.43	7.28	6.47
2010-11	6.67	7.61	6.72
2011-12	6.73	7.74	6.78
<b>FALL SEMESTER</b>			
1998-99	8.38	10.64	8.45
1999-00	8.52	11.03	8.60
2000-01	8.54	10.89	8.61
2001-02	8.02	10.71	8.72
2002-03	9.10	9.29	9.11
2003-04	8.91	10.41	8.97
2004-05	8.75	7.47	8.68
2005-06	8.45	9.84	8.51
2006-07	8.57	9.64	8.62
2007-08	8.53	9.23	8.57
2008-09	8.59	9.43	8.64
2009-10	8.68	10.05	8.74
2010-11	8.67	10.17	8.74
2011-12	8.75	9.88	8.80
<b>SPRING SEMESTER</b>			
1998-99	8.42	10.78	8.51
1999-00	8.20	10.94	8.28
2000-01	8.65	10.33	8.10
2001-02	8.71	9.85	8.75
2002-03	9.03	10.04	9.06
2003-04	8.81	10.19	8.86
2004-05	8.81	9.87	8.85
2005-06	8.56	9.85	8.61
2006-07	8.47	9.32	8.51
2007-08	8.45	9.18	8.49
2008-09	8.58	9.71	8.64
2009-10	8.79	9.84	8.83
2010-11	8.79	9.93	8.83
2011-12	8.73	10.03	8.78

SOURCE: Utah Board of Regents' Official Reports, 1998-99 to 2011-2012

TABLE 9.

## FALL 2007-2008 TO 2011-2012 AVERAGE CLASS SIZE

DEPARTMENT	2007-2008	2008-2009	2009-2010	2010-2011	2011-2012	Average
Accounting	16.97	18.05	19.75	22.57	23.35	20.14
Apprenticeship/Carpentry-Millwright	16.45	15.00	8.33	9.00		12.20
Apprenticeship/Culinary Arts	13.83	17.00	1.00			10.61
Apprenticeship/Electricity-Instrumentation	14.62	16.19	11.88	15.27	13.87	14.37
Apprenticeship/General	8.40	9.87	3.81	9.00	6.00	7.42
Apprenticeship/HVAC	6.33	8.00	6.20	5.80	4.25	6.12
Apprenticeship/Ironworkers	6.00					6.00
Apprenticeship/Lineman				2.17		2.17
Apprenticeship/Plumbers-Pipefitters	13.61	12.85	12.72	11.67	8.88	11.95
Apprenticeship/Stage Hands	6.67	5.00	8.50	7.00	7.33	6.90
Architectural Technology	18.65	17.68	17.17	17.00	14.78	17.06
Architectural Technology (Prison) **		21.75				21.75
ASL/Interpreting	9.85	10.38	12.47	11.33	10.57	10.92
Automotive Collision Repair & Painting	10.00	16.00	18.50	16.00	19.25	15.95
Automotive Technician	10.32	12.36	19.14	22.11	18.06	16.40
Automotive Technician (Prison) **	13.71	9.92				11.82
Aviation Technology/Aviation Maintenance Tech	10.92	11.18	11.38	16.75	17.85	13.62
Aviation Technology/Professional Pilot	12.32	10.79	14.47	13.34	12.96	12.78
Barbering/Cosmetology	15.72	16.53	17.92	16.77	16.19	16.63
Biology	22.62	24.52	26.44	25.99	24.94	24.90
Biotechnology	9.56	7.88	6.42	9.79	9.55	8.64
Bldg Construction/Construction Mgt	12.21	9.83	10.67	14.10	15.12	12.39
Bldg Construction (Prison) **	8.56	6.78				7.67
Business Economics	20.95	21.36	23.47	27.89	26.29	23.99
Business Management	18.43	20.51	19.44	21.28	18.99	19.73
Chemistry	23.19	24.40	25.42	25.84	22.71	24.31
Communication	18.91	19.18	21.46	23.12	22.14	20.96
Computer Info Systems	20.01	21.66	23.61	25.86	25.20	23.27
Computer Science	13.19	14.16	15.08	15.92	18.44	15.36
Criminal Justice	9.65	11.76	16.26	19.99	19.73	15.48
Culinary Arts			20.85	26.65	19.54	22.35
Culinary Arts (Prison) **	12.89	10.91				11.90
Dental Hygiene	22.86	26.50	27.69	19.38	15.62	22.41
Developmental Education	19.50	19.86	23.00	20.75	20.88	20.80
Diesel Systems Technology	15.50	11.50	14.17	22.13	17.78	16.22
Education	17.00	16.80	23.27	27.08	27.08	22.25
Electrical & Instrumentation Tech **	6.88					6.88
Electronics **	6.44					6.44
Electronics & Instrumentation Tech **		8.92	7.59	3.75		6.75
Electronics (Prison) **	10.27	16.67				13.47
Engineering	9.93	8.54	9.97	10.69	11.51	10.13
Engineering Design/Drafting Tech	11.82	11.52	13.32	13.52	14.47	12.93
Engineering Design/Drafting Tech (Prison) **		15.00				15.00
Engineering Des/Draft Tech/Arch Tech (Prison) **	21.43					21.43
English	21.20	21.67	23.32	21.86	21.88	21.99
English Second Language	14.43	14.29	20.18	14.92	17.50	16.26
Environmental Technology **	14.14	13.13	13.71	11.20		13.05
Family & Human Studies	11.88	14.66	15.79	17.92	15.82	15.21
Fashion Institute		12.08	19.26	19.03	18.38	17.19
Finance and Credit	20.56	19.94	22.03	23.71	23.68	21.98
Fine Arts	12.16	13.16	16.39	18.85	15.25	15.16
Geosciences	16.41	19.15	18.68	23.13	23.88	20.25
Health & Lifetime Activities	15.57	16.64	18.46	21.29	20.26	18.44
History/Anthropology	24.58	23.19	26.45	30.89	29.00	26.82
Humanities *	21.19	23.85	28.06	29.39	29.48	26.39
Interior Design		12.00	14.10	16.05	16.42	14.64
Languages	15.04	15.19	18.34	19.47	19.51	17.51
Marketing	12.69	12.29	13.14	18.78	17.60	14.90
Mathematics	24.08	26.47	29.44	28.97	29.16	27.62
Medical Assistant	13.54	13.21	22.20	22.26	19.10	18.06
Medical Lab Technology **	1.00					1.00
Non-Destructive Testing Tech	16.14	16.33	23.29	13.75	18.75	17.65
Nursing	26.34	16.06	16.29	17.63	17.88	18.84
Occupational Therapy Asst	14.44	12.68	14.21	14.70	14.80	14.17
Paralegal Studies	12.00	13.00	16.55	16.67	16.26	14.90
Physical Therapist Asst	13.84	13.71	16.08	14.75	17.14	15.10
Physics	20.56	20.20	22.28	23.20	24.51	22.15
Political Science	21.70	23.03	26.60	30.43	30.00	26.35
Psychology	23.11	25.65	28.85	29.23	29.32	27.23
Radiologic Technology	27.44	26.53	24.94	23.88	21.19	24.80
Short-Term Intensive Training (Non-credit)	8.33	9.00	5.29	4.67	4.39	6.34
Social Work	17.64	17.05	23.12	27.11	28.59	22.70
Sociology	24.71	28.22	31.95	31.89	30.86	29.53
Surgical Technology	8.80	9.13	9.88	11.29	11.89	10.20
Surveying		14.92	11.08	10.25	12.18	12.11
Telecommunications **	6.15					6.15
Visual Art & Design	13.21	13.74	14.35	14.23	14.92	14.09
Visual Art & Design (Prison) **	9.40	16.33				12.87
Welding	7.09	8.23	13.05	11.50	15.65	11.10
<b>COLLEGE AVERAGE CLASS SIZE</b>	<b>17.39</b>	<b>18.30</b>	<b>20.40</b>	<b>21.36</b>	<b>20.87</b>	<b>19.66</b>

NOTE: Index code (ACBSSP) is distributed throughout the appropriate index code/department.  
Courses with "0" enrollment were excluded.

\*\* Program eliminated.



**TAB B.**

**Student  
Demographics**

## TAB B. STEP AHEAD

### STUDENT DEMOGRAPHICS

Salt Lake Community College served 33,167 students in credit and non-credit programs during Fall Semester 2011 (not including School of Applied Technology). This is 19% of all students reported by the Utah System of Higher Education. (This does not include the counts within workshops and specialized training programs offered by the School of Applied Technology.)

Salt Lake Community College's Non-white population is the largest of all USHE institutions. One notable change in SLCC's demographics is an increase in female students attending the College. Since Fall Semester 2002-2003, the number of female students attending the College has increased by 23.4%, while the number of male students has increased by 10.7%.

#### Fast Facts

- Fall 11-12 Avg. Age = 25.35
- Fall 11-12 Non-white Population = 18.9%
- Fall 11-12 Female to Male Ratio = 1.02:1

TABLE 10.

**STUDENT ENROLLMENT BY MAJORS  
Fall Headcount (Credit Students)**

DEPARTMENT	07-08	08-09	09-10	10-11	11-12
Accounting	253	245	287	318	267
Air-Conditioning, Refrigeration & Heating	41	44	37	32	19
Apprenticeship (all)	1049	1020	764	601	498
Architectural Technology	319	296	229	227	207
ASL/Interpreting	136	128	131	139	119
Automotive Collision Repair & Painting	25	28	47	34	60
Automotive Technician	192	158	168	182	146
Aviation Technology/Aviation Maintenance Tech	93	90	106	123	150
Aviation Technology/Professional Pilot	103	148	188	224	237
Barbering/Cosmetology	546	504	365	345	330
Biology	242	269	309	374	410
Biotechnology	59	55	70	99	127
Broadcast Video/Audio Production	16	6	20	24	16
Building Construction/Construction Mgt (all)	431	351	258	226	169
Business	1403	1427	1563	1574	1785
Business Management	340	357	362	382	350
Chemistry	198	162	199	188	214
Communication (all)	213	267	190	281	246
Computer Info Systems	234	238	298	332	311
Computer Science	315	332	339	366	508
Continuing Ed Programs	197	59	55	39	33
Criminal Justice	431	447	560	677	700
Culinary Arts	127	162	174	237	224
Dental Hygiene	74	55	57	40	33
Diesel Systems Technology	69	56	51	66	55
Economics	46	41	41	53	54
Education	417	426	554	507	571
Electrical & Instrumentation Tech ***	16	25			
Electronics & Instrumentation Tech			81	34	27
Electronics Technology	88	84			
Energy Management				31	30
Engineering (all)	482	452	646	724	757
Engineering Design/Drafting Tech	92	92	110	135	197
English	186	194	246	259	314
Environmental Technology	38	28	37	19	10
Family & Human Studies	66	55	65	69	133
Fashion Institute		43	86	111	138
Film Production Technician	52	57	71	96	111
Finance and Credit	64	69	74	71	65
Fitness Technician	48	43	80	112	102
General Studies *	10066	14372 *	17135 *	16429 *	14767 *
Geosciences	20	36	51	59	83
Health Sciences **	2630	2577	3326	3571	3458
History	105	107	123	129	140
Humanities	64	56	66	74	145
Interior Design		50	71	98	107
International Studies	75	68	83	72	85
Marketing Mgt	76	76	91	94	109
Mathematics	7	17	41	76	94
Medical Assistant	135	138	230	279	268
Medical Lab Technology	30	7	2	2	2
Mortuary Science					1
Music	83	96	107	130	112
Non-Destructive Testing Tech	30	32	37	26	17
Nursing **	397	472	468	372	474
Occupational Therapy Asst	52	37	44	44	49
Para Education	23	21	12	41	29
Paralegal Studies	146	172	237	241	227
Physical Therapist Asst	72	59	57	51	50
Physics	28	36	43	50	63
Political Science	65	79	81	75	84
Psychology	372	354	429	479	517
Radiologic Technology	110	86	84	79	68
Social Sciences	8	2		1	1
Social Work	265	210	224	278	329
Sociology	76	95	120	140	172
Surgical Technology	33	21	33	26	24
Surveying	70	70	52	46	40
Telecommunications	40				
Unknown			4	5	
Visual Art & Design (all)	443	474	590	555	682
Welding	52	52	72	74	79
<b>COLLEGE GRAND TOTALS</b>	<b>24274</b>	<b>28385</b>	<b>32831</b>	<b>32947</b>	<b>31999</b>

NOTE: Due to the reporting procedures, the report equals "IPEDS Total" or credit students, not the "Budget Related or the Institution Total".

\* Due to the reporting procedures, concurrent enrollment students are in the report for third week, starting 2008-2009.

\*\* Health Sciences includes students with an AAS in a specific area earning an AS in Health Science, and students in all health-related programs prior to their formal admittance into those specific programs. Nursing numbers previously included all health science students and are now separately identified.

\*\*\* Students are combined with Apprenticeship/Electricity-Instrumentation.

Studies have found this report to be about 80% accurate.

SOURCE: Utah Board of Regents' Official Reports, Fall Semester, 2007-2008 to 2011-2012

TABLE 11.

## STUDENT ENROLLMENT BY MAJORS AND BY GENDER Fall Headcount (Credit Students)

Department	2007-08		2008-09		2009-10		2010-11		2011-12	
	Male	Female	Male	Female	Male	Female	Male	Female	Male	Female
Accounting	95	158	94	151	108	179	119	199	101	166
Air-Conditioning, Refrigeration & Heating	40	1	43	1	37	0	31	1	19	0
Apprenticeship (all)	1028	21	995	25	745	19	584	17	484	14
Architectural Technology	262	57	245	51	183	46	191	36	171	36
ASL/Interpreting	8	128	11	117	14	117	15	124	14	105
Automotive Collision Repair & Painting	24	1	26	2	43	4	33	1	58	2
Automotive Technician	163	29	153	5	158	10	172	10	142	4
Aviation Technology/Aviation Maintenance Tech	88	5	87	3	104	2	117	6	143	7
Aviation Technology/Professional Pilot	93	10	133	15	166	22	202	22	218	19
Barbering/Cosmetology	19	527	28	476	14	351	25	320	20	310
Biology	139	103	149	120	158	151	220	154	219	191
Biotechnology	18	41	26	29	36	34	53	46	61	66
Broadcast Video/Audio Production	10	6	4	2	14	6	21	3	13	3
Building Construction/Construction Mgt (all)	391	40	320	31	244	14	216	10	161	8
Business	921	482	935	492	977	586	957	617	1096	689
Business Management	231	109	230	127	228	134	219	163	219	131
Chemistry	125	73	105	57	128	71	123	65	130	84
Communication (all)	117	96	146	121	97	93	152	129	111	135
Computer Info Systems	188	46	197	41	247	51	279	53	260	51
Computer Science	292	23	301	31	311	28	328	38	460	48
Continuing Ed Programs	40	157	24	35	14	41	15	24	16	17
Criminal Justice	239	192	261	186	354	206	416	261	432	268
Culinary Arts	64	63	86	76	91	83	130	107	120	104
Dental Hygiene	3	71	1	54	1	56	0	40	1	32
Diesel Systems Technology	68	1	56	0	50	1	64	2	54	1
Economics	41	5	34	7	31	10	43	10	45	9
Education	73	344	95	331	124	430	93	414	116	455
Electrical & Instrumentation Tech ***	15	1	24	1						
Electronics & Instrumentation Tech					77	4	31	3	26	1
Electronics Technology	83	5	82	2						
Energy Management							27	4	25	5
Engineering (all)	450	32	414	38	591	55	649	75	681	76
Engineering Design/Drafting Tech	85	7	73	19	92	18	117	18	179	18
English	63	123	65	129	80	166	100	159	110	204
Environmental Technology	25	13	15	13	24	13	14	5	7	3
Family & Human Studies	6	60	5	50	6	59	7	62	17	116
Fashion Institute			2	41	12	74	10	101	8	130
Film Production Technician	44	8	41	16	56	15	81	15	85	26
Finance and Credit	32	32	34	35	42	32	43	28	35	30
Fitness Technician	19	29	20	23	41	39	65	47	59	43
General Studies *	5271	4795	7139 *	7233 *	8403 *	8732 *	7907	8522 *	6984	7783
Geosciences	15	5	26	10	34	17	37	22	54	29
Health Sciences **	539	2091	512	2065	722	2604	864	2707	848	2610
History	67	38	58	49	76	47	79	50	74	66
Humanities	22	42	18	38	23	43	32	42	48	97
Interior Design			1	49	4	67	2	96	4	103
International Studies	37	38	47	21	47	36	37	35	46	39
Marketing Mgt	40	36	42	34	55	36	56	38	56	53
Mathematics	6	1	10	7	24	17	37	39	48	46
Medical Assistant	15	120	25	113	33	197	41	238	44	224
Medical Lab Technology	13	17	3	4	1	1	0	2	0	2
Mortuary Science									0	1
Music	48	35	57	39	67	40	74	56	73	39
Non-Destructive Testing Tech	29	1	27	5	30	7	23	3	16	1
Nursing **	68	329	94	378	98	370	68	304	88	386
Occupational Therapy Asst	15	37	6	31	7	37	10	34	10	39
Para Education	3	20	3	18	3	9	8	33	7	22
Paralegal Studies	17	129	31	141	53	184	48	193	39	188
Physical Therapist Asst	18	54	18	41	14	43	9	42	10	40
Physics	21	7	27	9	36	7	41	9	51	12
Political Science	40	25	50	29	57	24	50	25	55	29
Psychology	120	252	115	239	146	283	145	334	159	358
Radiologic Technology	38	72	25	61	33	51	28	51	22	46
Social Sciences	3	5	0	2			0	1	0	1
Social Work	64	201	39	171	44	180	80	198	89	240
Sociology	31	45	33	62	37	83	43	97	55	117
Surgical Technology	10	23	6	15	11	22	3	23	9	15
Surveying	65	5	65	5	50	2	43	3	37	3
Telecommunications	40	0								
Unknown					4	0	1	4		
Visual Art & Design (all)	213	230	205	269	308	282	266	289	346	336
Welding	49	3	49	3	70	2	72	2	74	5
<b>COLLEGE GRAND TOTALS</b>	<b>12519</b>	<b>11755</b>	<b>14291</b>	<b>14094</b>	<b>16188</b>	<b>16643</b>	<b>16066</b>	<b>16881</b>	<b>15462</b>	<b>16537</b>

NOTE: Due to the reporting procedures, the report equals "IPEDS Total" or credit students, not the "Budget Related or the Institution total".

\* Due to the reporting procedures, concurrent enrollment students are in the report for third week, starting 2008-2009.

\*\* Health Sciences includes students with an AAS in a specific area earning an AS in Health Science, and students in all health-related programs prior to their formal admittance into those specific programs. Nursing numbers previously included all health science students and are now separately identified.

\*\*\* Students are combined with Apprenticeship/Electricity-Instrumentation.

Studies have found this report to be about 80% accurate.

SOURCE: Utah Board of Regents' Official Reports, Fall Semester, 2007-2008 to 2011-2012

GRAPH 12.

**WHERE STUDENTS LIVE BY ZIP CODE  
FALL 2011-2012 HEADCOUNT  
ZIP CODES WITH 50 OR MORE STUDENTS**

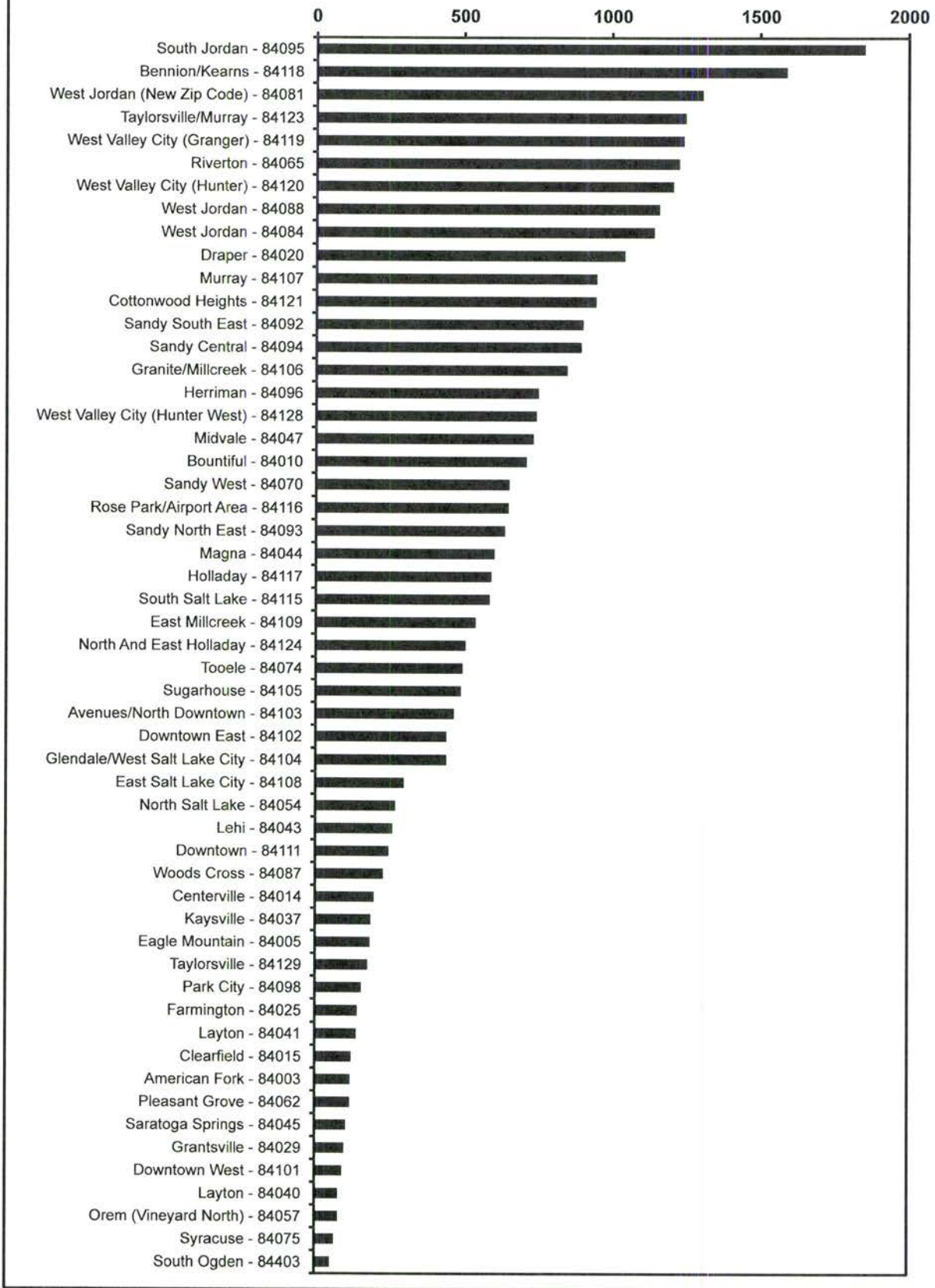


TABLE 12.

## WHERE STUDENTS LIVE BY ZIP CODE

Fall 2011-2012 Headcount  
Zip Codes with 50 or more students

ZIP CODE	LOCATION	NUMBER OF STUDENTS	PERCENT OF TOTAL
84095	South Jordan	1,850	5.58%
84118	Bennion/Kearns	1,587	4.78%
84081	West Jordan (New Zip Code as of July 2008)	1,305	3.93%
84123	Taylorsville/Murray	1,247	3.76%
84119	West Valley City (Granger)	1,240	3.74%
84065	Riverton	1,225	3.69%
84120	West Valley City (Hunter)	1,205	3.63%
84088	West Jordan	1,158	3.49%
84084	West Jordan	1,140	3.44%
84020	Draper	1,041	3.14%
84107	Murray	947	2.86%
84121	Cottonwood Heights	945	2.85%
84092	Sandy South East	901	2.72%
84094	Sandy Central	894	2.70%
84106	Granite/Millcreek	847	2.55%
84096	Herriman	750	2.26%
84128	West Valley City (Hunter West)	743	2.24%
84047	Midvale	733	2.21%
84010	Bountiful	710	2.14%
84070	Sandy West	652	1.97%
84116	Rose Park/Airport Area	649	1.96%
84093	Sandy North East	637	1.92%
84044	Magna	602	1.82%
84117	Holladay	592	1.78%
84115	South Salt Lake	586	1.77%
84109	East Millcreek	539	1.63%
84124	North and East Holladay	505	1.52%
84074	Tooele	495	1.49%
84105	Sugarhouse	490	1.48%
84103	Avenues/North Downtown	466	1.41%
84102	Downtown East	441	1.33%
84104	Glendale/West Salt Lake City	441	1.33%
84108	East Salt Lake City	297	0.90%
84054	North Salt Lake	268	0.81%
84043	Lehi	259	0.78%
84111	Downtown	246	0.74%
84087	Woods Cross	228	0.69%
84014	Centerville	197	0.59%
84037	Kaysville	186	0.56%
84005	Eagle Mountain	183	0.55%
84129	Taylorsville	176	0.53%
84098	Park City	155	0.47%
84025	Farmington	141	0.43%
84041	Layton	138	0.42%
84015	Clearfield	121	0.36%
84003	American Fork	117	0.35%
84062	Pleasant Grove	116	0.35%
84045	Saratoga Springs	103	0.31%
84029	Grantsville	97	0.29%
84101	Downtown West	90	0.27%
84040	Layton	77	0.23%
84057	Orem (Vineyard North)	77	0.23%
84075	Syracuse	63	0.19%
84403	South Ogden	50	0.15%
Total of this list		30,948	93.31%
Total in other zip codes & Unknown		2,219	6.69%
<b>College Total, Fall Semester, 2011-2012</b>		<b>33,167</b>	<b>100.00%</b>

NOTE: The report equals "Institution Total"

SOURCE: Utah Board of Regents' Official Report, Fall Semester, 2011-2012

**TABLE 13.**  
**STUDENT DISTRIBUTION BY AGE AND GENDER**

**Fall Headcount**

<b>Number of Students</b>						
<b>A G E</b>	<b>GENDER</b>	<b>07-08 *</b>	<b>08-09 *</b>	<b>09-10 *</b>	<b>10-11 *</b>	<b>11-12 *</b>
Under 18	Males	118	1746	2412	2135	2067
	Females	365	2475	3321	3098	2969
	<b>Total</b>	<b>483</b>	<b>4221 **</b>	<b>5733 **</b>	<b>5233 **</b>	<b>5036 **</b>
18 - 19	Males	1963	2161	2346	2346	2133
	Females	2597	2670	2906	2973	2856
	<b>Total</b>	<b>4560</b>	<b>4831</b>	<b>5252</b>	<b>5319</b>	<b>4989</b>
20 - 21	Males	2090	2007	2206	2075	1970
	Females	2201	2205	2418	2459	2360
	<b>Total</b>	<b>4291</b>	<b>4212</b>	<b>4624</b>	<b>4534</b>	<b>4330</b>
22 - 24	Males	3224	3202	3271	3227	3028
	Females	1966	2004	2312	2360	2330
	<b>Total</b>	<b>5190</b>	<b>5206</b>	<b>5583</b>	<b>5587</b>	<b>5358</b>
25 - 29	Males	2791	2794	3160	3226	3056
	Females	1896	1851	2242	2399	2326
	<b>Total</b>	<b>4687</b>	<b>4645</b>	<b>5402</b>	<b>5625</b>	<b>5382</b>
30 - 34	Males	1054	1077	1357	1528	1587
	Females	890	1018	1267	1345	1422
	<b>Total</b>	<b>1944</b>	<b>2095</b>	<b>2624</b>	<b>2873</b>	<b>3009</b>
35 - 39	Males	526	538	604	647	691
	Females	613	628	776	887	864
	<b>Total</b>	<b>1139</b>	<b>1166</b>	<b>1380</b>	<b>1534</b>	<b>1555</b>
Over 39	Males	752	752	810	864	907
	Females	1223	1234	1379	1349	1399
	<b>Total</b>	<b>1975</b>	<b>1986</b>	<b>2189</b>	<b>2213</b>	<b>2306</b>
Unknown	Males	1	14	22	18	23
	Females	4	9	22	11	11
	<b>Total</b>	<b>5</b>	<b>23</b>	<b>44</b>	<b>29</b>	<b>34</b>
<b>Total</b>	<b>Males</b>	<b>12519</b>	<b>14291</b>	<b>16188</b>	<b>16066</b>	<b>15462</b>
	<b>Females</b>	<b>11755</b>	<b>14094</b>	<b>16643</b>	<b>16881</b>	<b>16537</b>
<b>Total Students</b>		<b>24274</b>	<b>28385</b>	<b>32831</b>	<b>32947</b>	<b>31999</b>

NOTE: \* Due to the reporting procedures, the report equals "IPEDS Total".

\*\* Due to changes in reporting procedures, a higher number of concurrent enrollment students are now captured in 3rd week.

SOURCE: Utah Board of Regents' Official Reports, Fall Semester, 2007-2008 to 2011-2012

**TABLE 14.**  
**STUDENT DISTRIBUTION BY RACIAL BACKGROUND AND GENDER**  
**Fall Headcount**

<b>Number of Students</b>						
<b>Race</b>	<b>Gender *</b>	<b>07-08 *</b>	<b>08-09 *</b>	<b>09-10 *</b>	<b>10-11 *</b>	<b>11-12 *</b>
Non-Resident/ Alien	Males	154	193	217	204	197
	Females	138	164	190	174	157
	<b>Total</b>	<b>292</b>	<b>357</b>	<b>407</b>	<b>378</b>	<b>354</b>
<b>% of Total</b>		<b>1.20%</b>	<b>1.26%</b>	<b>1.24%</b>	<b>1.15%</b>	<b>1.11%</b>
Black Non- Hispanic	Males	254	276	331	350	350
	Females	164	198	274	285	300
	<b>Total</b>	<b>418</b>	<b>474</b>	<b>605</b>	<b>635</b>	<b>650</b>
<b>% of Total</b>		<b>1.72%</b>	<b>1.67%</b>	<b>1.84%</b>	<b>1.93%</b>	<b>2.03%</b>
Amer. Indian/ Alaskan Nat	Males	145	152	157	131	113
	Females	131	172	209	204	164
	<b>Total</b>	<b>276</b>	<b>324</b>	<b>366</b>	<b>335</b>	<b>277</b>
<b>% of Total</b>		<b>1.14%</b>	<b>1.14%</b>	<b>1.11%</b>	<b>1.02%</b>	<b>0.87%</b>
Asian/Pac. Islander	Males	522	603	741	708	642
	Females	545	700	840	826	796
	<b>Total</b>	<b>1,067</b>	<b>1,303</b>	<b>1,581</b>	<b>1,534</b>	<b>1,438</b>
<b>% of Total</b>		<b>4.40%</b>	<b>4.59%</b>	<b>4.82%</b>	<b>4.66%</b>	<b>4.49%</b>
Hispanic	Males	978	1,158	1,338	1,433	1,558
	Females	1,066	1,290	1,509	1,667	1,854
	<b>Total</b>	<b>2,044</b>	<b>2,448</b>	<b>2,847</b>	<b>3,100</b>	<b>3,412</b>
<b>% of Total</b>		<b>8.42%</b>	<b>8.62%</b>	<b>8.67%</b>	<b>9.41%</b>	<b>10.66%</b>
White Non- Hispanic	Males	9,617	10,809	12,313	11,695	10,697
	Females	8,962	10,568	12,541	11,834	10,828
	<b>Total</b>	<b>18,579</b>	<b>21,377</b>	<b>24,854</b>	<b>23,529</b>	<b>21,525</b>
<b>% of Total</b>		<b>76.54%</b>	<b>75.31%</b>	<b>75.71%</b>	<b>71.41%</b>	<b>67.27%</b>
More Than One Race	Males					123
	Females					141
	<b>Total</b>					<b>264</b>
<b>% of Total</b>					<b>0.83%</b>	
Race/Ethnicity Unknown	Males	849	1,100	1,091	1,545	1,782
	Females	749	1,002	1,080	1,891	2,297
	<b>Total</b>	<b>1,598</b>	<b>2,102</b>	<b>2,171</b>	<b>3,436</b>	<b>4,079</b>
<b>% of Total</b>		<b>6.58%</b>	<b>7.41%</b>	<b>6.61%</b>	<b>10.42%</b>	<b>12.74%</b>
College Totals	Males	12,519	14,291	16,188	16,066	15,462
	Females	11,755	14,094	16,643	16,881	16,537
	<b>Total</b>	<b>24,274</b>	<b>28,385</b>	<b>32,831</b>	<b>32,947</b>	<b>31,999</b>

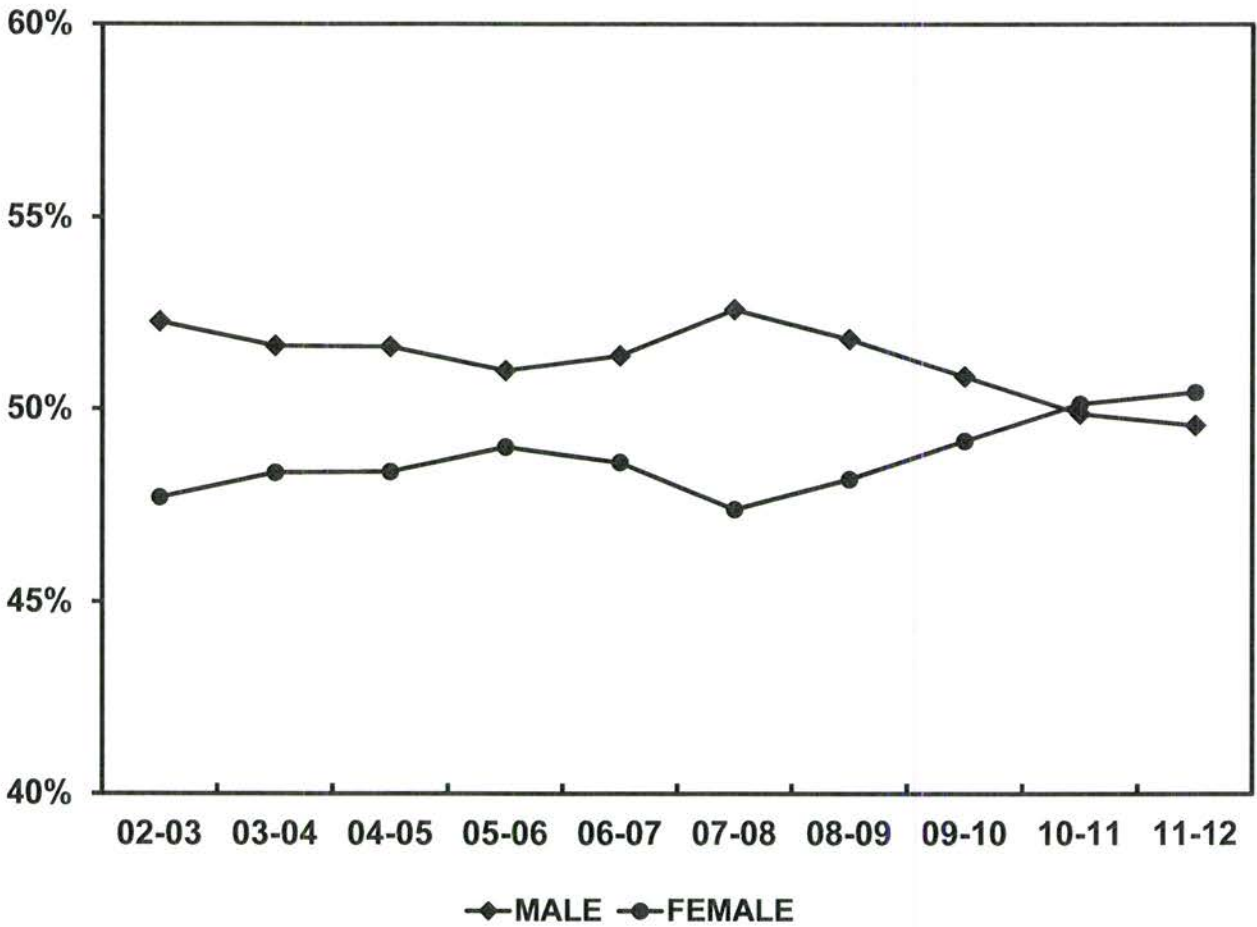
NOTE: \* Due to the reporting procedures, the report equals "IPEDS Total" or "Total Credit Students", not the "Budget Related" or the "Institution Total".

SOURCE: Utah Board of Regents' Official Reports, 2007-2008 to 2011-2012



**GRAPH/TABLE 15.**

**MALE TO FEMALE RATIOS  
FALL QUARTER/SEMESTER**



**MALE TO FEMALE RATIOS  
FALL QUARTER/SEMESTER**

	02-03	03-04	04-05	05-06	06-07	07-08	08-09	09-10	10-11	11-12
MALE	12105	12280	12771	12528	12241	12530	12678	14094	14185	13404
FEMALE	11049	11497	11969	12039	11581	11294	11789	13629	14258	13637
TOTAL	23154	23777	24740	24567	23822	23824	24467	27723	28443	27041
MALE	52.28%	51.65%	51.62%	51.00%	51.39%	52.59%	51.82%	50.84%	49.87%	49.57%
FEMALE	47.72%	48.35%	48.38%	49.00%	48.61%	47.41%	48.18%	49.16%	50.13%	50.43%

NOTE: Totals equal "Total of All Budget Related", not the "IPEDS" or the "Institution Total".  
SOURCE: Utah Board of Regents' Official Reports, 2002-2003 to 2011-2012

**TABLE/GRAPH 16.**

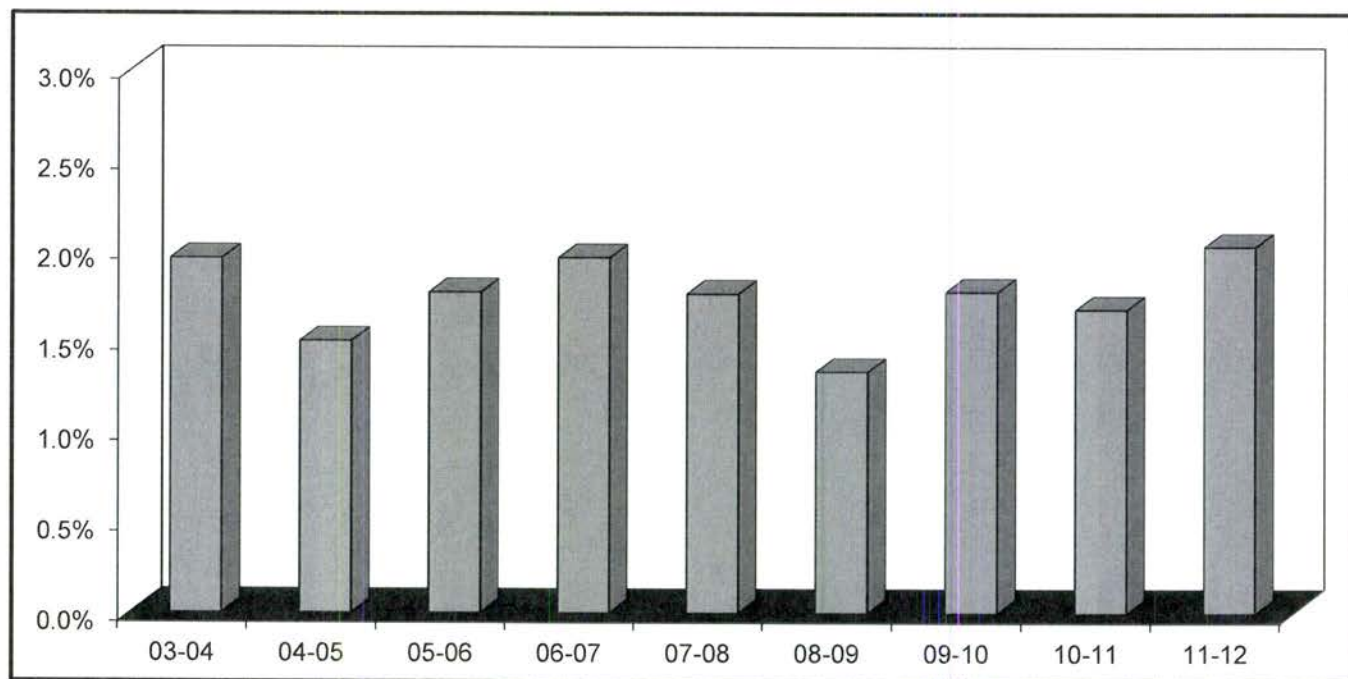
**VETERANS CURRENTLY ELIGIBLE TO RECEIVE BENEFITS  
BY ACADEMIC CLASSIFICATION  
FALL HEADCOUNT**

<b>Academic Classification</b>	<b>03-04</b>	<b>04-05</b>	<b>05-06</b>	<b>06-07</b>	<b>07-08</b>	<b>08-09</b>	<b>09-10</b>	<b>10-11</b>	<b>11-12</b>
Vocational or Technical	240	212	224	240	250	205	322	260	354
Non-Vocational or Non-Technical	232	174	228	252	193	193	277	310	317
<b>TOTAL</b>	<b>472</b>	<b>386</b>	<b>452</b>	<b>492</b>	<b>443</b>	<b>398</b>	<b>599</b>	<b>570</b>	<b>671</b>
All Other Students	23680	25325	25099	24637	24701	29468	33175	33413	32496
<b>GRAND TOTAL</b>	<b>24152</b>	<b>25711</b>	<b>25551</b>	<b>25129</b>	<b>25144</b>	<b>29866</b>	<b>33774</b>	<b>33983</b>	<b>33167</b>
<b>Percent Veterans</b>	<b>2.0%</b>	<b>1.5%</b>	<b>1.8%</b>	<b>2.0%</b>	<b>1.8%</b>	<b>1.3%</b>	<b>1.8%</b>	<b>1.7%</b>	<b>2.0%</b>

NOTE: Totals = "Institution Total"

SOURCE: Utah Board of Regents' Official Reports, Fall Semester, 2003-2004 to 2011-2012

**VETERANS CURRENTLY ELIGIBLE TO RECEIVE BENEFITS  
FALL HEADCOUNT  
BY PERCENT**



**TABLE 17.**

**SALT LAKE COMMUNITY COLLEGE  
AVERAGE AGE OF STUDENTS**

	RESIDENTS			NON-RESIDENTS		
	MALE	FEMALE	TOTAL	MALE	FEMALE	TOTAL
<b>SUMMER TERM</b>						
1998-99	27.71	27.08	27.39	27.74	27.12	27.41
1999-00	26.96	26.21	26.59	27.03	26.29	26.63
2000-01	26.93	26.35	26.64	26.98	26.43	26.68
2001-02	27.70	26.87	27.31	27.58	26.86	27.29
2002-03	27.08	26.85	26.97	27.06	26.77	26.99
2003-04	26.94	27.06	27.03	26.85	27.12	27.05
2004-05	26.79	27.03	26.92	26.82	27.04	26.89
2005-06	26.90	26.80	26.86	26.87	26.71	26.84
2006-07	27.26	26.97	27.08	27.18	27.02	27.12
2007-08	27.20	26.99	26.98	27.16	26.99	27.01
2008-09	26.95	27.09	27.03	26.92	27.04	27.01
2009-10	26.88	27.04	26.96	26.84	27.08	26.99
2010-11	27.24	27.21	27.22	27.28	27.21	27.23
2011-12	27.53	27.50	27.52	27.49	27.54	27.50
<b>FALL SEMESTER</b>						
1998-99	27.48	26.48	27.01	27.45	26.43	27.04
1999-00	26.07	25.59	25.85	26.06	25.63	25.90
2000-01	25.48	25.39	25.44	25.55	25.34	25.49
2001-02	25.56	25.42	25.54	25.48	25.68	25.60
2002-03	25.76	25.86	25.81	25.72	25.85	25.79
2003-04	25.18	25.66	25.45	25.15	25.65	25.48
2004-05	25.63	26.14	25.93	25.67	26.11	25.91
2005-06	26.05	26.70	26.46	26.08	26.76	26.45
2006-07	25.92	26.32	26.19	25.90	26.27	26.18
2007-08	26.02	26.48	26.27	26.04	26.51	26.23
2008-09	25.51	25.42	25.43	25.52	25.37	25.41
2009-10	24.97	25.11	25.04	24.96	25.14	25.12
2010-11	25.39	25.30	25.35	25.43	25.29	25.31
2011-12	25.80	25.48	25.64	25.82	25.39	25.62
<b>SPRING SEMESTER</b>						
1998-99	25.88	25.67	25.78	25.84	25.65	25.81
1999-00	N/A	N/A	N/A	N/A	N/A	N/A
2000-01	25.85	25.78	25.81	25.65	25.90	25.85
2001-02	25.64	25.72	25.68	25.54	25.83	25.75
2002-03	24.80	24.92	24.85	24.76	24.92	24.81
2003-04	25.69	26.09	25.89	25.61	26.10	25.90
2004-05	25.74	26.35	26.06	25.76	26.38	26.05
2005-06	25.84	26.52	26.27	25.88	26.46	26.25
2006-07	26.01	26.58	26.32	26.06	26.60	26.33
2007-08	26.08	26.39	26.23	26.11	26.42	26.24
2008-09	25.99	26.14	26.05	25.96	26.13	26.07
2009-10	26.13	26.50	26.31	26.15	26.51	26.28
2010-11	26.14	26.41	26.28	26.16	26.48	26.31
2011-12	26.21	26.11	26.16	26.21	26.13	26.20

NOTE: Age is not a completely accurate figure, in that some students choose not to release this information.

SOURCE: Utah Board of Regents' Official Reports, 1998-1999 to 2011-2012

**TAB C.**

**Faculty/  
Staff**

## **TAB C. STEP AHEAD**

### **FACULTY/STAFF**

Salt Lake Community College makes every effort to provide a quality higher education for all students. To do this, SLCC hires qualified and dedicated faculty and other professionals to provide the appropriate learning opportunities for students. During the 2010-2011 year, SLCC's student-to-faculty ratio decreased due to strategic enrollment management initiatives.

#### **Fast Facts**

- 2010-2011 Full-time Equivalent Faculty = 894.0
- 2010-2011 Full-time Equivalent Staff = 592.9
- 2010-2011 Student to Faculty Ratio = 21.45
- % of Instruction Taught by Part-time Faculty = 61.2%

**TABLE 18.**

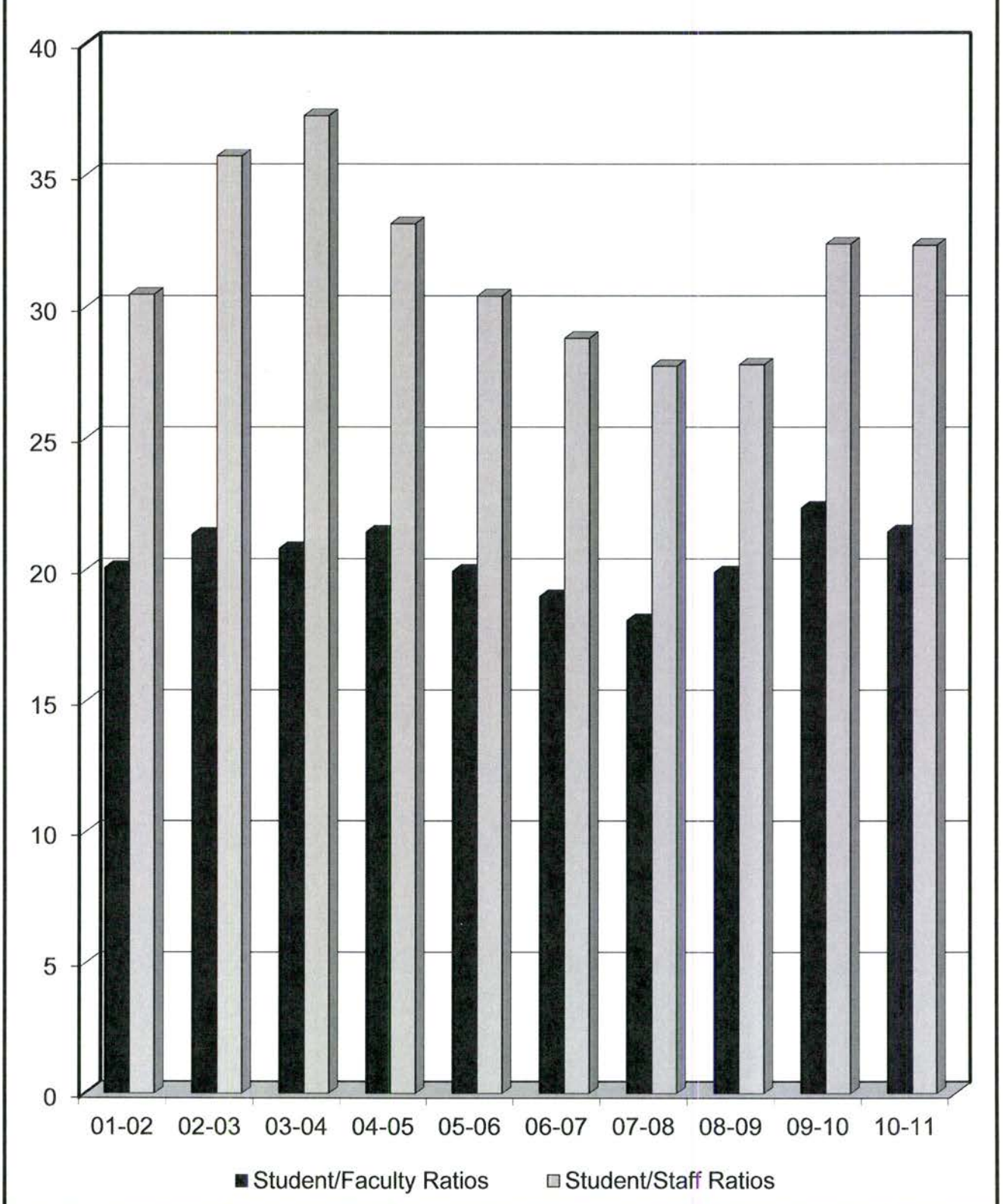
**2010-2011 STUDENT TO FACULTY RATIOS (ANNUALIZED)**

DEPARTMENT	2010-2011
Accounting	22.86
Apprenticeship (all)	16.99
Architectural Technology	11.05
ASL/Interpreting	13.70
Automotive Collision Repair & Painting	9.86
Automotive Technician	14.49
Aviation Technology/Aviation Maintenance Tech	11.19
Aviation Technology/Professional Pilot	11.71
Barbering/Cosmetology	8.35
Biology	26.06
Biotechnology	8.85
Bldg Construction/Construction Mgt	11.37
Business Economics	31.45
Business Management	23.56
Chemistry	24.61
Communication	26.77
Computer Info Systems	27.91
Computer Science	15.07
Criminal Justice	21.38
Culinary Arts	11.41
Dental Hygiene	4.06
Developmental Education	22.61
Diesel Systems Technology	12.18
Education	38.03
Electronics & Instrumentation Tech	6.50
Engineering	12.48
Engineering Design/Drafting Tech	8.93
English	21.75
English Second Language	25.70
Environmental Technology	14.38
Family & Human Studies	31.92
Fashion Institute	21.31
Finance and Credit	25.59
Fine Arts	26.25
Geosciences	24.21
Health & Lifetime Activities	21.25
History/Anthropology	31.91
Humanities	31.39
Interior Design	19.88
Languages	20.77
Marketing	16.05
Mathematics	32.64
Medical Assistant	19.05
Non-Destructive Testing Tech	18.79
Nursing	9.51
Occupational Therapy Asst	12.63
Paralegal Studies	16.20
Physical Therapist Asst	13.57
Physics	28.16
Political Science	30.67
Psychology	30.50
Radiologic Technology	15.52
Short-Term Intensive Training	N/A
Social Work	29.68
Sociology	35.64
Surgical Technology	9.72
Surveying	7.68
Visual Art & Design	12.24
Welding	10.33
<b>COLLEGE STUDENT TO FACULTY RATIO</b>	<b>21.45</b>

NOTE: A formula is used to determine the FTE equivalent for hourly faculty.

GRAPH 19.

### SALT LAKE COMMUNITY COLLEGE STUDENT TO FACULTY/STAFF RATIOS



**TABLE 19.**

**STUDENT/FACULTY AND STUDENT/STAFF RATIOS**

**SALT LAKE COMMUNITY COLLEGE**

**Education and General - Academic Year and Summer  
Counting Hourly Faculty**

<b>Year</b>	<b>Student/ Faculty Ratio</b>	<b>Student/ Staff Ratio</b>
1989-90	25.10	34.82
1990-91	19.54	34.03
1991-92	19.99	33.54
1992-93	20.10	32.57
1993-94	20.30	30.65
1994-95	17.63	29.70
1995-96	17.60	28.68
1996-97	18.22	29.83
1997-98	18.79	29.35
1998-99	18.17	26.40
1999-00	18.85	27.32
2000-01	19.00	28.47
2001-02	20.08	30.48
2002-03	21.35	35.73
2003-04	20.81	37.27
2004-05	21.44	33.18
2005-06	19.96	30.42
2006-07	18.99	28.82
2007-08	18.07	27.75
2008-09	19.91	27.81
2009-10	22.37	32.40
2010-11	21.45	32.35

**FTE STUDENTS, FACULTY AND STAFF**

<b>Year</b>	<b>Students</b>	<b>Faculty</b>	<b>Staff</b>
1989-90	7,584	302.1	217.8
1990-91	8,596	440.0	252.6
1991-92	10,243	512.4	305.4
1992-93	10,775	536.0	330.8
1993-94	11,449	564.1	373.5
1994-95	11,846	671.9	398.8
1995-96	12,431	706.3	433.4
1996-97	13,002	713.5	435.9
1997-98	13,216	703.5	450.3
1998-99	12,220	672.6	462.9
1999-00	13,131	696.6	480.7
2000-01	14,004	737.2	491.9
2001-02	15,351	764.5	503.6
2002-03	16,223	760.0	454.1
2003-04	16,571	796.3	444.6
2004-05	16,520	770.4	497.9
2005-06	15,802	791.8	519.4
2006-07	15,496	815.9	537.7
2007-08	15,322	847.8	552.1
2008-09	16,152	811.1	580.9
2009-10	18,514	827.6	571.4
2010-11	19,179	894.0	592.9

SOURCE: Legislative Analyst Information/Actual Reported Data



TABLE 20.

**SALARIED PERSONNEL: POSITION FTES  
BY DEPARTMENT/PROGRAM, BY GENDER, AND BY FACULTY/STAFF  
ED & GENERAL INDEXES (10000 Fund)  
(FILLED POSITIONS AS OF 10/31/11)**

	Full-time Faculty			Full-time Admin/Staff			All Full-time		
	Male	Female	Total	Male	Female	Total	Male	Female	Total
<b><u>President's Office</u></b>									
President's Office					3.64	3.64		3.64	3.64
<b><u>Provost of Academic Affairs</u></b>									
Provost Office				1.00	1.00	2.00	1.00	1.00	2.00
<b><u>Assoc. Provost for Education &amp; Community Partnerships</u></b>									
Assoc. Provost Office					1.00	1.00		1.00	1.00
Distance Education				5.00	7.00	12.00	5.00	7.00	12.00
University Center					1.00	1.00		1.00	1.00
<b><u>Asst. Provost of Institutional Effectiveness</u></b>									
Asst Provost's Office					2.00	2.00		2.00	2.00
Assessment, Accred & Planning					1.00	1.00		1.00	1.00
Assessment, Curriculum & Sched				2.00	3.00	5.00	2.00	3.00	5.00
Center for Innovation & Prof Dvlpmnt					3.00	3.00		3.00	3.00
Faculty Senate					1.00	1.00		1.00	1.00
Faculty Services & Study Abroad					2.00	2.00		2.00	2.00
Faculty Development Support				0.54		0.54	0.54		0.54
Institutional Research				3.00	2.00	5.00	3.00	2.00	5.00
<b><u>School of Arts, Communication and New Media</u></b>									
Dean's Office					3.00	3.00		3.00	3.00
Div of Arts, Comm & New Media Communication *	5.01	5.00	10.01	1.00	1.00	2.00	1.00	1.00	2.00
Fashion Institute/Interior Design					1.00	1.00	5.01	5.00	10.01
Fine Arts	6.00	1.00	7.00				1.00	1.00	2.00
Visual Art & Design	8.00	5.00	13.00	1.00		1.00	6.00	1.00	7.00
<b><u>School of Business</u></b>									
Dean's Office				1.00	2.00	3.00	1.00	2.00	3.00
Div of Accounting, Finance & Econ					2.00	2.00		2.00	2.00
Accounting	3.00	4.00	7.00		1.00	1.00	3.00	5.00	8.00
Finance & Credit	2.50		2.50				2.50		2.50
Business Economics	3.50	2.00	5.50				3.50	2.00	5.50
Div of Mgmt, Mktg & Cul Instit				1.00		1.00	1.00		1.00
Business Management	6.00	2.00	8.00				6.00	2.00	8.00
Marketing	3.00	1.00	4.00				3.00	1.00	4.00
Culinary Arts	2.00	2.00	4.00				2.00	2.00	4.00
Division of Compnr Sci & Info Sys					2.00	2.00		2.00	2.00
Computer Information Systems	7.00	2.00	9.00				7.00	2.00	9.00
Computer Science *	3.87		3.87				3.87		3.87
Paralegal Studies	2.00	1.00	3.00				2.00	1.00	3.00

	Full-time Faculty			Full-time Admin/Staff			All Full-time		
	Male	Female	Total	Male	Female	Total	Male	Female	Total
<b><u>School of Developmental Ed &amp; Learning Resources</u></b>									
Dean's Office					1.00	1.00		1.00	1.00
ePortfolio					1.00	1.00		1.00	1.00
Div of Developmental Ed				1.00	1.00	2.00	1.00	1.00	2.00
Developmental Education	13.00	19.00	32.00	2.00	3.00	5.00	15.00	22.00	37.00
ESL	2.00		2.00				2.00		2.00
Tutoring Initiative					1.00	1.00		1.00	1.00
Instructional Media				2.00	1.00	3.00	2.00	1.00	3.00
Library/Jordan				1.00	1.00	2.00	1.00	1.00	2.00
Library/Taylorsville Redwood				3.00	9.00	12.00	3.00	9.00	12.00
Library/South				2.00		2.00	2.00		2.00
<b><u>School of Health Sciences</u></b>									
Dean's Office					2.00	2.00		2.00	2.00
Division of Allied Health					2.00	2.00		2.00	2.00
Occupational Therapy Assistant		2.00	2.00					2.00	2.00
Physical Therapist Assistant	1.00	1.00	2.00				1.00	1.00	2.00
Surgical Technology	1.00	0.50	1.50				1.00	0.50	1.50
Radiologic Technology	1.00	2.00	3.00				1.00	2.00	3.00
Medical Assistant		4.00	4.00					4.00	4.00
Dental Hygiene		2.00	2.00		3.00	3.00		5.00	5.00
Division of Nursing					2.27	2.27		2.27	2.27
Nursing		20.24	20.24		1.00	1.00		21.24	21.24
<b><u>School of Humanities and Social Sciences</u></b>									
Dean's Office				1.00	1.00	2.00	1.00	1.00	2.00
Dept of Social Behavior Sciences				1.00		1.00	1.00		1.00
Political Science	2.00	1.00	3.00				2.00	1.00	3.00
Sociology	2.00	2.00	4.00				2.00	2.00	4.00
Social Work		1.00	1.00					1.00	1.00
English	5.00	18.00	23.00	1.00	1.00	2.00	6.00	19.00	25.00
Dept of Family & Human Studies				1.00		1.00	1.00		1.00
Family & Human Studies		2.00	2.00		2.17	2.17		4.17	4.17
Pre Teacher Education		2.00	2.00					2.00	2.00
History/Anthropology	5.00	3.00	8.00	1.00	1.00	2.00	6.00	4.00	10.00
Dept of Humanities, Lang & Cult				1.00	1.00	2.00	1.00	1.00	2.00
ASL	1.00	1.00	2.00	1.00		1.00	2.00	1.00	3.00
Humanities	3.00	3.00	6.00				3.00	3.00	6.00
Languages	2.00	3.00	5.00	1.00		1.00	3.00	3.00	6.00
Psychology	2.00	6.00	8.00	1.00		1.00	3.00	6.00	9.00
<b><u>School of Science, Math and Engineering</u></b>									
Dean's Office				1.00	2.00	3.00	1.00	2.00	3.00
Biology	5.50	8.00	13.50	1.00	4.00	5.00	6.50	12.00	18.50
Biotechnology	1.00	1.00	2.00	4.50	3.00	7.50	5.50	4.00	9.50
Div of Natural Sciences				1.00	1.00	2.00	1.00	1.00	2.00
Architectural Technology	3.00		3.00				3.00		3.00
Chemistry	4.00	1.00	5.00		0.94	0.94	4.00	1.94	5.94
Engineering Design/Draft Tech	2.00	1.00	3.00				2.00	1.00	3.00
Geosciences	2.00	1.00	3.00				2.00	1.00	3.00
Physics	2.00	1.00	3.00		0.94	0.94	2.00	1.94	3.94
Surveying	1.00		1.00				1.00		1.00
Engineering	5.00	1.00	6.00	2.00	1.00	3.00	7.00	2.00	9.00
Health & Lifetime Activities	4.00	5.00	9.00		1.00	1.00	4.00	6.00	10.00
Math	14.00	6.00	20.00	1.00	2.00	3.00	15.00	8.00	23.00

	Full-time Faculty			Full-time Admin/Staff			All Full-time		
	Male	Female	Total	Male	Female	Total	Male	Female	Total
<b><u>School of Technical Specialties</u></b>									
Dean's Office					1.00	1.00		1.00	1.00
Div of Technical Specialties				1.00	1.00	2.00	1.00	1.00	2.00
Auto Collision Repair	2.00		2.00				2.00		2.00
Automotive Tech	7.00		7.00				7.00		7.00
Bldg Contr/Construction Mgmt	3.00		3.00	1.00		1.00	4.00		4.00
Diesel Systems Technology	2.00		2.00				2.00		2.00
Barbering/Cosmetology	1.00	3.00	4.00		2.00	2.00	1.00	5.00	6.00
Apprenticeship Office				1.00	1.00	2.00	1.00	1.00	2.00
Apprenticeship/General				1.00		1.00	1.00		1.00
Division of Aviation & Related Tech.					1.00	1.00		1.00	1.00
Professional Pilot/Aviation Tech	2.00	1.00	3.00				2.00	1.00	3.00
Aviation Maintenance	5.00		5.00				5.00		5.00
Non-Destructive Test Technology	1.00		1.00				1.00		1.00
Welding	1.00		1.00				1.00		1.00
<b><u>Assoc. Provost for Business Partnerships &amp; Dean of the School of Professional &amp; Econ. Dev.</u></b>									
Dean's Office					1.00	1.00		1.00	1.00
Financial Services					1.50	1.50		1.50	1.50
Miller Conferencing				0.45		0.45	0.45		0.45
Dir Non-Credit Operations				0.36		0.36	0.36		0.36
Div Chair Continuing Education					0.63	0.63		0.63	0.63
Computer Training Program				0.48		0.48	0.48		0.48
Div Chair Bus Employer Outreach				0.72		0.72	0.72		0.72
Small Bus Developmnt Regional					1.00	1.00		1.00	1.00
Custom Fit				1.00	1.00	2.00	1.00	1.00	2.00
Instit of Public Safety & Crim Justice				0.89	0.51	1.40	0.89	0.51	1.40
Criminal Justice	3.00		3.00				3.00		3.00
<b><u>Vice President of Business Services</u></b>									
Vice President's Office				1.00	1.00	2.00	1.00	1.00	2.00
Accounting Systems/Payroll					7.00	7.00		7.00	7.00
Budget Services				1.00	4.00	5.00	1.00	4.00	5.00
Business Office				2.00	9.00	11.00	2.00	9.00	11.00
Cashiering/AR					4.00	4.00		4.00	4.00
Collections					5.00	5.00		5.00	5.00
EEO Administration					2.00	2.00		2.00	2.00
Emerg Resp/Campus Security				2.00		2.00	2.00		2.00
Human Resources				3.00	10.00	13.00	3.00	10.00	13.00
Internal Audit				3.00		3.00	3.00		3.00
Inventory					1.00	1.00		1.00	1.00
Mail Services					1.00	1.00		1.00	1.00
Purchasing					5.00	5.00		5.00	5.00
Risk Management					2.00	2.00		2.00	2.00
<b><u>Office of Information Technology</u></b>									
Academic Computing				7.13	2.00	9.13	7.13	2.00	9.13
Administrative Computing Services				6.00	2.00	8.00	6.00	2.00	8.00
Chief Information Officer Office				5.00	1.00	6.00	5.00	1.00	6.00
Desktop Computing				6.00	1.00	7.00	6.00	1.00	7.00
Help Desk				3.00		3.00	3.00		3.00
Network Services				9.50	3.00	12.50	9.50	3.00	12.50
Technical Services				2.00	1.00	3.00	2.00	1.00	3.00
Web Applications				3.00		3.00	3.00		3.00

	Full-time Faculty			Full-time Admin/Staff			All Full-time		
	Male	Female	Total	Male	Female	Total	Male	Female	Total
<b>Facilities Services</b>									
Asst Vice Pres Facilities Services			2.00		1.00	3.00	2.00	1.00	3.00
Arch/Proj Services			5.00		1.00	6.00	5.00	1.00	6.00
Cabinetmakers			2.00			2.00	2.00		2.00
Carpenters			9.00		0.33	9.33	9.00	0.33	9.33
Custodial Services			37.00		12.00	49.00	37.00	12.00	49.00
Distribution			2.00			2.00	2.00		2.00
Electricians			4.00		0.34	4.34	4.00	0.34	4.34
Environmental Health & Safety			1.00			1.00	1.00		1.00
Facilities Support			3.00			3.00	3.00		3.00
Grounds Maintenance			10.00			10.00	10.00		10.00
HVAC Systems			21.00		0.33	21.33	21.00	0.33	21.33
Interior Design					1.00	1.00		1.00	1.00
Key Office			1.50		0.50	2.00	1.50	0.50	2.00
Lighting Services			1.00			1.00	1.00		1.00
Moving Services			7.00			7.00	7.00		7.00
Operation & Maintenance/Miller			1.41			1.41	1.41		1.41
Painters			5.00			5.00	5.00		5.00
Plumbers			4.00			4.00	4.00		4.00
PM System			2.00			2.00	2.00		2.00
Signage			1.50			1.50	1.50		1.50
Space Inv/Energy					0.50	0.50		0.50	0.50
Vehicle Maintenance			1.00			1.00	1.00		1.00
<b>Vice President of Institutional Advancement</b>									
Vice President's Office			1.00		1.00	2.00	1.00	1.00	2.00
Institutional Marketing			6.00		7.40	13.40	6.00	7.40	13.40
Contact Center/Switchboard			1.00		5.00	6.00	1.00	5.00	6.00
Development Office			1.00		5.44	6.44	1.00	5.44	6.44
Media Operations			4.00			4.00	4.00		4.00
Regional Administration			3.00		3.00	6.00	3.00	3.00	6.00
<b>Vice President of Student Services</b>									
Vice President's Office					2.25	2.25		2.25	2.25
Grand Theatre			2.00			2.00	2.00		2.00
Asst Vice Pres of Student Plan & Support					2.00	2.00		2.00	2.00
Academic Advising			5.00		19.00	24.00	5.00	19.00	24.00
Academic Advising/Formal					4.00	4.00		4.00	4.00
Disability Resource Center			4.64		7.59	12.23	4.64	7.59	12.23
Hearing Impaired			0.36			0.36	0.36		0.36
Orientation					2.00	2.00		2.00	2.00
Prospective Students					5.00	5.00		5.00	5.00
Cooperative Education			2.00		3.75	5.75	2.00	3.75	5.75
Student Placement					1.00	1.00		1.00	1.00
Asst Vice Pres of Student Enrollment Services			1.00		1.00	2.00	1.00	1.00	2.00
Data Center					2.00	2.00		2.00	2.00
Enrollment Services					4.00	4.00		4.00	4.00
Financial Aid			3.00		18.90	21.90	3.00	18.90	21.90
Registration			3.00		8.00	11.00	3.00	8.00	11.00
Student Services - Jordan					3.00	3.00		3.00	3.00
Student Services - Offsite					1.00	1.00		1.00	1.00
Student Services - South					2.00	2.00		2.00	2.00
Testing Services			2.00		4.00	6.00	2.00	4.00	6.00
Veterans Services					1.00	1.00		1.00	1.00
Asst Vice Pres of Student Life & Dean of Students			1.00		1.00	2.00	1.00	1.00	2.00
Health & Wellness					1.89	1.89		1.89	1.89
International Students					2.47	2.47		2.47	2.47
Multi-Cultural					2.00	2.00		2.00	2.00
Community Service					2.35	2.35		2.35	2.35
Student Involvement Center					0.25	0.25		0.25	0.25
Athletics					1.00	1.00		1.00	1.00

\*\*\*\*\*

**COLLEGE WIDE SUMMARY**

	Full-time Faculty			Full-time Admin/Staff			All Full-time		
	Male	Female	Total	Male	Female	Total	Male	Female	Total
<b>Totals</b>	<b>162.38</b>	<b>146.74</b>	<b>309.12</b>	<b>267.98</b>	<b>303.88</b>	<b>571.86</b>	<b>430.36</b>	<b>450.62</b>	<b>880.98</b>

\*\*\*\*\*

Prepared by: Arlene Asay, Budget Office  
 \*Reduced FTE due to sabbatical leave

TABLE 21.

**SALARIED PERSONNEL: POSITION FTE'S  
BY DEPARTMENT/PROGRAM, BY GENDER, AND BY FACULTY/STAFF  
SERVICE ENTERPRISES, AUXILIARY, DESIGNATED, RESTRICTED  
& SCHOOL OF APPLIED TECHNOLOGY INDEXES  
(FILLED POSITIONS AS OF 10/31/11)**

	Full-time Faculty			Full-time Admin/Staff			All Full-time		
	Male	Female	Total	Male	Female	Total	Male	Female	Total
<b><u>President's Office</u></b>									
Exents Coordinator					0.356	0.356		0.356	0.356
<b><u>Assoc. Provost for Education &amp; Community Partnerships</u></b>									
Concurrent Enrollment				4.00	6.00	10.00	4.00	6.00	10.00
Online Course Fees/Testing Ctr					1.00	1.00		1.00	1.00
<b><u>Asst. Provost of Institutional Effectiveness</u></b>									
Curriculum Development				0.46		0.46	0.46		0.46
<b><u>School of Applied Technology</u></b>									
Grants				1.00	0.50	1.50	1.00	0.50	1.50
State Appropriated	13.00	11.00	24.00	14.51	18.50	33.01	27.51	29.50	57.01
<b><u>School of Arts, Communication and New Media</u></b>									
Digital Arts	2.00		2.00	1.00		1.00	3.00		3.00
Media Council					1.00	1.00		1.00	1.00
<b><u>School of Business</u></b>									
Capitol Dining				2.00	1.00	3.00	2.00	1.00	3.00
Health Information Tech Grants	2.00		2.00		1.00	1.00	2.00	1.00	3.00
<b><u>School of Developmental Ed &amp; Learning Resources</u></b>									
UBEST Project				1.00	2.00	3.00	1.00	2.00	3.00
<b><u>School of Health Sciences</u></b>									
Nursing Partnerships	1.00	3.00	4.00		0.73	0.73	1.00	3.73	4.73
Surgical Technology		0.50	0.50					0.50	0.50
<b><u>School of Humanities and Social Sciences</u></b>									
Eccles Lab School					0.71	0.71		0.71	0.71
Sign Language		1.00	1.00					1.00	1.00
<b><u>School of Science, Math and Engineering</u></b>									
Biology	0.50		0.50				0.50		0.50
Biotechnology				0.50	1.00	1.50	0.50	1.00	1.50
<b><u>School of Technical Specialties</u></b>									
NDT Training	1.00		1.00				1.00		1.00
Youth Build Grant				1.00		1.00	1.00		1.00

	Full-time Faculty			Full-time Admin/Staff			All Full-time		
	Male	Female	Total	Male	Female	Total	Male	Female	Total
<b><u>Assoc. Provost for Business Partnerships &amp; Dean of the School of Professional &amp; Econ. Dev.</u></b>									
Accelerated Business Degree					0.50	0.50		0.50	0.50
Assoc Provost Self Support Adm					2.00	2.00		2.00	2.00
Business & Industry Training				1.22	1.00	2.22	1.22	1.00	2.22
Business Employer Outreach Ed				0.28	1.00	1.28	0.28	1.00	1.28
CE Admin. Self Support					1.37	1.37		1.37	1.37
Composite Training Program				0.78		0.78	0.78		0.78
Computer Training Program				0.52		0.52	0.52		0.52
Corporate Training & Testing				1.00		1.00	1.00		1.00
Electric Sector & Smart Grid				3.00	2.73	5.73	3.00	2.73	5.73
Energy Management					0.50	0.50		0.50	0.50
Ford Grant				1.00		1.00	1.00		1.00
Miller Business Innovation				1.00	1.00	2.00	1.00	1.00	2.00
Miller Conferencing/Events				2.55	1.00	3.55	2.55	1.00	3.55
Miller Financial Services					2.50	2.50		2.50	2.50
Program & Course Development					5.28	5.28		5.28	5.28
Public Safety/Homeland Security	1.00		1.00	0.11	1.49	1.60	1.11	1.49	2.60
SBDC State				1.00	1.00	2.00	1.00	1.00	2.00
SBDC Regional				1.00		1.00	1.00		1.00
State Energy Sector Partnership				1.00	2.00	3.00	1.00	2.00	3.00
STIT					1.00	1.00		1.00	1.00
Women Business Institute					1.00	1.00		1.00	1.00
<b><u>Vice President of Business Services</u></b>									
Accounting Systems/Payroll				1.00		1.00	1.00		1.00
Auxiliary Custodians				3.00	3.00	6.00	3.00	3.00	6.00
Cashiering - A/R				3.00	10.00	13.00	3.00	10.00	13.00
Grants Accountant				1.00		1.00	1.00		1.00
Parking Services/Public Safety				6.00	3.00	9.00	6.00	3.00	9.00
SC Computer Lab Aides				0.50		0.50	0.50		0.50
<b><u>Vice President of Institutional Advancement</u></b>									
Grants Administration					2.00	2.00		2.00	2.00
<b><u>Vice President of Student Services</u></b>									
Vice President's Office					0.75	0.75		0.75	0.75
Academic & Career Advising					1.00	1.00		1.00	1.00
Athletics				5.00	7.17	12.17	5.00	7.17	12.17
Child Care Center					1.00	1.00		1.00	1.00
College Store				2.00	8.00	10.00	2.00	8.00	10.00
Community Service					2.65	2.65		2.65	2.65
Disability Resources					1.16	1.16		1.16	1.16
Financial Aid				1.00	3.10	4.10	1.00	3.10	4.10
Food Services				4.00	2.00	6.00	4.00	2.00	6.00
Grand Theatre					2.00	2.00		2.00	2.00
Health & Wellness				1.75	6.12	7.87	1.75	6.12	7.87
ID Center				1.00	2.00	3.00	1.00	2.00	3.00
International Students					0.53	0.53		0.53	0.53
LAC Activities				1.00		1.00	1.00		1.00
Multi Cultural Affairs				1.00		1.00	1.00		1.00
Printing Services				2.00	1.00	3.00	2.00	1.00	3.00
Prospective Students				2.00		2.00	2.00		2.00
Student Center/Redwood				2.59	7.00	9.59	2.59	7.00	9.59
Student Center/South				1.00	1.00	2.00	1.00	1.00	2.00
Student Life & Leadership				3.00	4.75	7.75	3.00	4.75	7.75
Student Services - Offsite					2.00	2.00		2.00	2.00
Student Support Services					7.00	7.00		7.00	7.00
Veterans Affairs					1.00	1.00		1.00	1.00

\*\*\*\*\*  
COLLEGE WIDE SUMMARY

	Full-time Faculty			Salaried Admin/Staff			All Full-time		
	Male	Female	Total	Male	Female	Total	Male	Female	Total
Totals	20.50	15.50	36.00	81.77	138.38	220.15	102.27	153.88	256.15

**TABLE 22.**

**SALT LAKE COMMUNITY COLLEGE  
FACULTY INFORMATION**

	MALE	FEMALE	TOTAL
<b>TENURE</b>			
Tenured	103	94	197
Tenure Track	51	50	101
Off Tenure	29	18	47
<b>Total</b>	<b>183</b>	<b>162</b>	<b>345</b>
<b>RANKING</b>			
Instructor	64	30	94
Assistant Professor	51	47	98
Associate Professor	40	61	101
Professor	28	24	52
<b>Total</b>	<b>183</b>	<b>162</b>	<b>345</b>
<b>EDUCATIONAL CREDENTIALS</b>			
Less than 2 Years	16	1	17
2 Year Degree	15	9	24
Bachelor Degree	25	13	38
Masters Degree	93	116	209
Doctorate Degree	34	23	57
<b>Total</b>	<b>183</b>	<b>162</b>	<b>345</b>
<b>MALE/FEMALE RATIOS</b>			
Male	183		183
Female		162	162
<b>Total</b>	<b>183</b>	<b>162</b>	<b>345</b>

NOTE: School of Applied Technology (SAT) numbers are included

SOURCE: James Broadbent, HR Manager, Faculty; SLCC HR Department



**TAB D.**

**Degrees and  
Awards**

## TAB D. STEP AHEAD

### DEGREES AND AWARDS

In 2010-2011, Salt Lake Community College awarded 3,413 Associate Degrees. SLCC had 35.2% of all Associate Degrees in the Utah System of Higher Education. *Community College Week* recognized SLCC as being 4th in the nation for the number of Associate Degrees awarded out of all two-year community colleges.

#### Fast Facts Number of Degrees Awarded 2010-2011

- AS = 2,563
- AAS = 710
- AA = 96
- APE = 44
- Certificates = 140
- Diplomas = 24

TABLE 23.

## DISTRIBUTION OF GRADUATES BY DEGREE AND BY MAJOR

PROGRAM AREA	2008-09						2009-10						2010-11					
	APE	AA	AS	AAS	CERT	DIP	APE	AA	AS	AAS	CERT	DIP	APE	AA	AS	AAS	CERT	DIP
Accounting				12	7					9	10					12	9	
Apprenticeship (all)				25						32						47		
Architectural Technology			24	39					23	10					22	9		
ASL/Interpreting		7						12						13				
Automotive Collision Repair & Painting				3						4	1					4		
Automotive Technician				13						7						16		
Aviation Maintenance Technician				13		1				7		1				10		1
Aviation Technology/Professional Pilot			8						9						9			
Barbering/Cosmetology				54	28	31				50	47	36				55	12	23
Biology			12						11						9			
Biotechnology/Biomanufacturing				8						4	1				8	5	1	
Bldg Construction/Construction Mgt (all)			13	30						8					9	5		
Business		36	216					36	254					32	228			
Business Mgt/Log Mgt/Prod Mgt/SBO (all)				5	2					4	1					1		
Chemistry			22						26						16			
Communications (all)			17						21						18			
Computer Info Systems (all)			8	3					15	1					13	5		
Computer Science			21						23						21			
Criminal Justice			46	2					51	3					70	3		
Culinary Arts				36						13						16		
Dental Hygiene				21						32						22		
Diesel Systems Technology				10						5						11		
Economics			11						11						15			
Education			8						19						29			
Electrical and Instrumentation Tech				22	3					9	6					8	2	
Electronics			9	11					4	16					2	6		
Energy Management																10		
Engineering (all)	26							42						44				
Engineering Design/Drafting Tech			14	14	9	41			14	10	8	27			8	2	12	
English		14		12					14	16					16	6		1
Environmental Technology				2						5					2			
Family & Human Studies				2						1	1							
Fashion Institute						1						5						4
Film Production Tech				7						6						2		
Finance and Credit				3						4	1					2		
Fitness Technician				7						12						8		
General Studies			1556						1769						1805			
Geosciences (all)				5	1					2	1				4	3	2	
Health Science				53						83					93			
History		23							14						21			
Humanities		1							3						7			
Human Resource Technology				1														
Interior Design				1						10						6		
International Studies (all)		4							9					4				
Marketing Mgt				2	1					5	1					7	1	
Mathematics			5							3					6			
Medical Assistant					43						58						62	
Medical Lab Technology				1														
Music			2							3					8			
Non-Destructive Testing Tech				13						9						9		
Nursing				172						284					260			
Occupational Therapy Asst				22						15					15			
Paraeducation			3							2								
Paralegal Studies				27						38					36			
Physical Therapist Asst				29						23					22			
Physics			3							3					1			
Political Science			11							25					20			
Psychology			44							54					73			
Radiologic Technology				33						41						31		
Social Work		1	17						4	17				3	25			
Sociology			36							46					39			
Surgical Technology					53						61						32	
Surveying				14						13					10			
Telecommunications				5						4								
Visual Art & Design (all)			5	42	3				3	44	1			6	43	2		
Welding				6						9		1				9		
Inactive Majors (all)			1	1														
<b>COLLEGE TOTALS</b>	<b>26</b>	<b>86</b>	<b>2186</b>	<b>703</b>	<b>182</b>	<b>32</b>	<b>42</b>	<b>92</b>	<b>2509</b>	<b>741</b>	<b>220</b>	<b>38</b>	<b>44</b>	<b>96</b>	<b>2563</b>	<b>710</b>	<b>140</b>	<b>24</b>

TABLE 24.

DISTRIBUTION OF GRADUATES BY DEGREE  
BY MAJOR AND BY GENDER

PROGRAM AREA	MALE						FEMALE						TOTAL					
	2010-11						2010-11						2010-11					
	APE	AA	AS	AAS	CERT	DIP	APE	AA	AS	AAS	CERT	DIP	APE	AA	AS	AAS	CERT	DIP
Accounting					2	1					10	8					12	9
Apprenticeship (all)					44					3							47	
Architectural Technology				20	6				2	3						22	9	
ASL/Interpreting		2						11							13			
Automotive Collision Repair & Painting					4												4	
Automotive Technician					14					2							16	
Aviation Maintenance Technician					10		1										10	1
Aviation Technology/Professional Pilot			8						1							9		
Barbering/Cosmetology						1				55	11	23				55	12	23
Biology			5						4							9		
Biotechnology/Biomanufacturing			4	2	1				4	3					8	5	1	
Bldg Construction/Construction Mgt (all)			9	5											9	5		
Business		24	141					8	85					32	226			
Business Mgt/Log Mgt/Prod Mgt/SBO (all)										1							1	
Chemistry			12						4						16			
Communications (all)			9						9						18			
Computer Info Systems (all)			11	4					2	1					13	5		
Computer Science			20						1						21			
Criminal Justice			40	3					30						70	3		
Culinary Arts				10						6						16		
Dental Hygiene										22						22		
Diesel Systems Technology					11											11		
Economics			13						2						15			
Education			2						27						29			
Electrical and Instrumentation Tech				7	1					1	1					8	2	
Electronics			2	6											2	6		
Energy Management				9						1						10		
Engineering (all)	41							3						44				
Engineering Design/Drafting Tech			7	2	12				1						8	2	12	
English		6	1		1			10	5					16	6		1	
Environmental Technology									2						2			
Fashion Institute											4							4
Film Production Tech				2												2		
Finance and Credit										2						2		
Fitness Technician				1						7						8		
General Studies			842						963						1805			
Geosciences (all)			3	3	2				1						4	3	2	
Health Science			25						68						93			
History		9							12					21				
Humanities		3							4					7				
Interior Design				2						4						6		
International Studies (all)		3							1					4				
Marketing Mgt				4						3	1					7	1	
Mathematics			3						3						6			
Medical Assistant						3						59					62	
Music			5						3						8			
Non-Destructive Testing Tech				9												9		
Nursing				56						204					260			
Occupational Therapy Asst				2						13					15			
Paralegal Studies				8						28					36			
Physical Therapist Asst				1						21					22			
Physics			1												1			
Political Science			17						3						20			
Psychology			18						55						73			
Radiologic Technology				14						17						31		
Social Work		2	3						1	22				3	25			
Sociology			10						29						39			
Surgical Technology						11						21					32	
Surveying				10											10			
Visual Art & Design (all)			6	21	1					22	1			6	43	2		
Welding				9											9			
<b>COLLEGE TOTALS</b>	<b>41</b>	<b>49</b>	<b>1237</b>	<b>281</b>	<b>34</b>	<b>1</b>	<b>3</b>	<b>47</b>	<b>1326</b>	<b>429</b>	<b>106</b>	<b>23</b>	<b>44</b>	<b>96</b>	<b>2563</b>	<b>710</b>	<b>140</b>	<b>24</b>

**TAB E.**

**Financial  
Information**

## **TAB E. STEP AHEAD**

### **FINANCIAL INFORMATION**

Salt Lake Community College strives to keep higher education affordable for the residents of its service area. In a climate of state budget reductions, Salt Lake Community College increased tuition and fees by only 4% for 2011-2012.

Salt Lake Community College provides assistance when possible through Federal grants, student loans, and outside scholarships. The amount of Pell Grants awarded to SLCC students increased 29% over 2009-2010.

#### **Fast Facts**

- 2011-2012 Full-time Tuition and Fees (per semester) = \$1,526.00
- 2010-2011 Cost per FTE = \$2,552
- 2010-2011 Estimated Students with Financial Aid = 21,000

**TABLE 25.**

**SALT LAKE COMMUNITY COLLEGE  
2011-2012 CURRENT SEMESTER TUITION AND FEE SCHEDULE**

CREDIT HOURS	2011-2012 TUITION AND FEE SCHEDULE RESIDENT STUDENTS			2011-2012 TUITION AND FEE SCHEDULE NON-RESIDENT STUDENTS		
	REGULAR TUITION	TOTAL MISC. FEES	TOTAL TUITION & FEES	REGULAR TUITION	TOTAL MISC. FEES	TOTAL TUITION & FEES
1	110.00	53.00	163.00	383.00	53.00	436.00
2	220.00	70.00	290.00	766.00	70.00	836.00
3	330.00	87.00	417.00	1149.00	87.00	1236.00
4	440.00	104.00	544.00	1532.00	104.00	1636.00
5	550.00	121.00	671.00	1915.00	121.00	2036.00
6	660.00	138.00	798.00	2298.00	138.00	2436.00
7	770.00	155.00	925.00	2681.00	155.00	2836.00
8	880.00	172.00	1052.00	3064.00	172.00	3236.00
9	990.00	189.00	1179.00	3447.00	189.00	3636.00
10	1100.00	206.00	1306.00	3830.00	206.00	4036.00
11	1210.00	206.00	1416.00	4213.00	206.00	4419.00
12	1320.00	206.00	1526.00	4596.00	206.00	4802.00
13	1320.00	206.00	1526.00	4596.00	206.00	4802.00
14	1320.00	206.00	1526.00	4596.00	206.00	4802.00
15	1320.00	206.00	1526.00	4596.00	206.00	4802.00
16	1320.00	206.00	1526.00	4596.00	206.00	4802.00
17	1320.00	206.00	1526.00	4596.00	206.00	4802.00
18	1320.00	206.00	1526.00	4596.00	206.00	4802.00
19	1430.00	206.00	1636.00	4979.00	206.00	5185.00
20	1540.00	206.00	1746.00	5362.00	206.00	5568.00
21	1650.00	206.00	1856.00	5745.00	206.00	5951.00
22	1760.00	206.00	1966.00	6128.00	206.00	6334.00
23	1870.00	206.00	2076.00	6511.00	206.00	6717.00
24	1980.00	206.00	2186.00	6894.00	206.00	7100.00
25	2090.00	206.00	2296.00	7277.00	206.00	7483.00

**HISTORICAL TUITION AND FEE RATES**

CREDIT HOURS	2004-05 TUITION/ FEES	2005-06 TUITION/ FEES	2006-07 TUITION/ FEES	2007-08 TUITION/ FEES	2008-09 TUITION/ FEES	2009-10 TUITION/ FEES	2010-11 TUITION/ FEES	2011-12 TUITION/ FEES
<b>5</b>								
RESIDENT	526.00	556.50	581.25	607.00	634.50	638.00	646.00	671.00
NON-RES	1542.00	1658.50	1710.75	1791.00	1881.50	1935.00	1946.00	2036.00
<b>10</b>								
RESIDENT	941.00	999.00	1038.75	1093.25	1145.75	1203.00	1256.00	1306.00
NON-RES	2867.00	3071.00	3188.25	3367.25	3552.75	3695.00	3856.00	4036.00
<b>15</b>								
RESIDENT	1087.00	1156.00	1201.75	1267.25	1329.75	1395.00	1466.00	1526.00
NON-RES	3377.00	3616.00	3759.25	3977.25	4186.75	4365.00	4586.00	4802.00

TABLE 26.

**COST PER STUDENT CREDIT HOUR BY DEPARTMENT (ANNUALIZED FTE)  
INSTRUCTIONAL COST**

DEPARTMENT	07-08		08-09		09-10		10-11	
	AFTE	\$/SCH	AFTE	\$/SCH	AFTE	\$/SCH	AFTE	\$/SCH
Accounting	251	114	232	119	248	101	283	102
Apprenticeship (all)	585	68	503	76	345	74	271	72
Architectural Technology	88	159	79	186	87	199	84	177
Architectural Technology (Prison)			34	161				
ASL/Interpreting	87	177	89	160	112	128	84	137
Automotive Collision Repair & Painting	17	297	23	238	29	204	26	221
Automotive Technician	51	335	66	308	111	226	115	211
Automotive Technician (Prison)	39	232	33	205				
Aviation Technology/Aviation Maintenance Tec	71	275	66	287	91	245	129	217
Aviation Technology/Professional Pilot	46	202	43	192	57	178	74	151
Barbering/Cosmetology	447	149	422	158	309	153	287	170
Biology	964	62	984	65	1225	58	1231	61
Biotechnology	17	1067 *	18	1309 *	23	1234 *	26	1056 *
Bldg Construction/Construction Mgt	80	194	61	216	58	292	65	230
Bldg Construction (Prison)	93	233	80	308				
Business Economics	286	65	286	65	307	59	354	59
Business Management	382	98	400	96	409	92	436	80
Chemistry	532	55	541	54	597	58	591	64
Communication	575	75	625	74	732	62	829	66
Computer Info Systems	594	86	635	85	714	69	780	62
Computer Science	74	303	101	336	135	228	161	112
Criminal Justice	218	70	229	54	324	51	390	65
Culinary Arts					115	144	143	167
Culinary Arts (Prison)	45	153	48	135				
Dental Hygiene	39	416	47	367	50	431	34	553
Developmental Education	1293	94	1656	83	2119	72	2079	78
Diesel Systems Technology	19	400	15	545	30	278	43	362
Education	60	66	81	60	119	47	144	45
Electrical & Instrumentation Tech	28	456						
Electronics	26	433						
Electronics (Prison)	35	245	31	209				
Electronics & Instrumentation Tech			56	324	29	127 **	10	192 **
Engineering	118	246	108	306	129	275	164	227
Engineering Design/Drafting Tech	83	194	51	272	67	287	69	221
Engineering Design/Drafting Tech (Prison)			4	287				
Engin Des/Draft Tech/Arch Tech (Prison)	65	123						
English	956	93	1018	88	1331	73	1125	83
English Second Language	90	85	96	80	97	91	88	83
Environmental Technology	21	210	23	261	21	20 **	15	71 **
Family & Human Studies	222	62	205	79	232	72	268	69
Fashion Institute	45	71	61	65	91	68	106	65
Finance and Credit	159	95	149	90	153	88	168	78
Fine Arts	536	74	564	72	653	60	779	61
Geosciences	209	79	214	66	259	66	289	61
Health & Lifetime Activities	585	87	675	83	782	73	903	74
History/Anthropology	554	59	578	63	647	58	714	52
Humanities	477	65	515	53	572	50	607	50
Interior Design	53	74	59	87	61	64	79	65
Languages	252	98	246	98	269	81	278	88
Marketing	70	214	63	246	89	174	109	147
Mathematics	1331	59	1485	54	1775	48	1740	52
Medical Assistant	95	144	117	119	177	89	182	111
Medical Lab Technology	6	36	1	N/A				
Non-Destructive Testing Tech	18	219	17	252	23	205	20	177
Nursing	198	275	229	259	233	313	237	258
Occupational Therapy Asst	43	136	39	186	38	197	41	184
Paralegal Studies	95	112	97	128	121	98	134	107
Physical Therapist Asst	54	176	53	216	59	202	57	217
Physics	277	47	276	59	317	52	316	57
Political Science	162	78	165	63	173	60	195	54
Psychology	489	60	522	64	641	55	636	57
Radiologic Technology	85	112	78	134	77	155	76	150
Short-Term Intensive Training	18	195	22	345	22	643	17	392
Social Work	78	67	71	72	81	52	102	51
Sociology	271	59	258	67	284	59	310	54
Surgical Technology	19	212	19	235	19	233	19	238
Surveying			31	141	26	168	24	196
Telecommunications	46	407						
Visual Art & Design	448	140	501	126	540	128	564	135
Visual Art & Design (Prison)	11	29	10	70				
Welding	41	274	48	229	80	156	79	171
<b>INSTRUCTIONAL TOTALS</b>	<b>15322</b>	<b>99</b>	<b>16152</b>	<b>97</b>	<b>18514</b>	<b>85</b>	<b>19179</b>	<b>85</b>

NOTE: \* Biotechnology includes partnership funding.  
\*\* Program discontinued



TABLE 27.

## COST PER FULL-TIME EQUIVALENT (FTE) BY DEPARTMENT (ANNUALIZED FTE)

DEPARTMENT	07-08		08-09		09-10		10-11	
	AFTE	\$/FTE	AFTE	\$/FTE	AFTE	\$/FTE	AFTE	\$/FTE
Accounting	251	3423	232	3564	248	3028	283	3054
Apprenticeship (all)	585	2051	503	2290	345	2223	271	2160
Architectural Technology	88	4767	79	5591	87	5963	84	5297
Architectural Technology (Prison)			34	4837				
ASL/Interpreting	87	5316	89	4806	112	3843	84	4112
Automotive Collision Repair & Painting	17	8915	23	7153	29	6115	26	6615
Automotive Technician	51	10049	66	9254	111	6777	115	6325
Automotive Technician (Prison)	39	6955	33	6157				
Aviation Technology/AviationMaintenance Tech	71	8240	66	8605	91	7342	129	6507
Aviation Technology/Professional Pilot	46	6055	43	5755	57	5326	74	4533
Barbering/Cosmetology	447	4460	422	4741	309	4591	287	5091
Biology	964	1855	984	1952	1225	1732	1231	1838
Biotechnology	17	32005 *	18	39281 *	23	37008 *	26	31676 *
Bldg Construction/Construction Mgt	80	5810	61	6470	58	8757	65	6893
Bldg Construction (Prison)	93	6986	80	9241				
Business Economics	286	1954	286	1942	307	1781	354	1779
Business Management	382	2942	400	2866	409	2745	436	2407
Chemistry	532	1636	541	1624	597	1746	591	1927
Communication	575	2247	625	2211	732	1857	829	1968
Computer Info Systems	594	2575	635	2560	714	2064	780	1856
Computer Science	74	9081	101	10086	135	6849	161	3373
Criminal Justice	218	2089	229	1619	324	1515	390	1959
Culinary Arts					115	4318	143	5019
Culinary Arts (Prison)	45	4594	48	4056				
Dental Hygiene	39	12494	47	11014	50	12920	34	16577
Developmental Education	1293	2824	1656	2504	2119	2172	2079	2350
Diesel Systems Technology	19	11997	15	16348	30	8326	43	10863
Education	60	1970	81	1786	119	1400	144	1357
Electrical & Instrumentation Tech	28	13679						
Electronics	26	13002						
Electronics (Prison)	35	7351	31	6279				
Electronics & Instrumentation Tech			56	9727	29	3796 **	10	5769 **
Engineering	118	7386	108	9187	129	8255	164	6805
Engineering Design/Drafting Tech	83	5814	51	8165	67	8606	69	6629
Engineering Design/Drafting Tech (Prison)			4	8603				
Engin Des/Draft Tech/Arch Tech (Prison)	65	3681						
English	956	2781	1018	2640	1331	2186	1125	2488
English Second Language	90	2557	96	2402	97	2716	88	2477
Environmental Technology	21	6292	23	7819	21	596 **	15	2126 **
Family & Human Studies	222	1860	205	2361	232	2147	268	2066
Fashion Institute	45	2119	61	1941	91	2041	106	1945
Finance and Credit	159	2864	149	2696	153	2628	168	2354
Fine Arts	536	2207	564	2154	653	1791	779	1817
Geosciences	209	2379	214	1974	259	1987	289	1825
Health & Lifetime Activities	585	2599	675	2499	782	2203	903	2220
History/Anthropology	554	1768	578	1896	647	1750	714	1557
Humanities	477	1940	515	1597	572	1506	607	1496
Interior Design	53	2235	59	2621	61	1909	79	1955
Languages	252	2940	246	2931	269	2435	278	2634
Marketing	70	6421	63	7383	89	5233	109	4403
Mathematics	1331	1765	1485	1614	1775	1436	1740	1568
Medical Assistant	95	4325	117	3569	177	2664	182	3334
Medical Lab Technology	6	1078	1	N/A				
Non-Destructive Testing Tech	18	6564	17	7553	23	6163	20	5323
Nursing	198	8235	229	7774	233	9395	237	7749
Occupational Therapy Asst	43	4088	39	5594	38	5911	41	5513
Paralegal Studies	95	3352	97	3829	121	2932	134	3221
Physical Therapist Asst	54	5277	53	6491	59	6056	57	6514
Physics	277	1411	276	1785	317	1568	316	1703
Political Science	162	2340	165	1878	173	1803	195	1613
Psychology	489	1805	522	1908	641	1664	636	1715
Radiologic Technology	85	3368	78	4027	77	4658	76	4508
Short-Term Intensive Training	18	5844	22	10346	22	19287	17	11771
Social Work	78	2022	71	2158	81	1545	102	1532
Sociology	271	1774	258	2010	284	1775	310	1619
Surgical Technology	19	6367	19	7055	19	6976	19	7127
Surveying			31	4222	26	5042	24	5870
Telecommunications	46	12221						
Visual Art & Design	448	4213	501	3792	540	3852	564	4037
Visual Art & Design (Prison)	11	870	10	2087				
Welding	41	8227	48	6872	80	4680	79	5139
<b>INSTRUCTIONAL TOTALS</b>	<b>15322</b>	<b>2964</b>	<b>16152</b>	<b>2900</b>	<b>18514</b>	<b>2558</b>	<b>19179</b>	<b>2552</b>

NOTE: \$/FTE reflect actual costs

\* Biotechnology includes partnership funding.

**TABLE 28.****COSTS PER FTE (Full-Time Equivalent) STUDENT AT SLCC  
(Current and Adjusted for Inflation)**

<u>Academic Year</u>	<u>Cost Per Student</u>	<u>Inflation Rate (CPI)</u>	<u>Adjusted Cost Per Student</u>
1990-91	3545.00	130.70	2712.32
1991-92	3693.00	136.20	2711.45
1992-93	3959.00	140.30	2821.81
1993-94	4016.00	144.50	2779.24
1994-95	4319.00	148.20	2914.30
1995-96	4478.00	152.40	2938.32
1996-97	4432.00	156.90	2824.73
1997-98	4367.00	160.50	2720.87
1998-99	4856.00	163.00	2979.14
1999-00	4788.00	166.60	2873.95
2000-01	4887.00	172.20	2837.98
2001-02	4913.00	177.10	2774.14
2002-03	4550.00	179.90	2529.18
2003-04	4641.00	184.00	2522.28
2004-05	4881.00	188.90	2583.91
2005-06	5412.00	195.30	2771.12
2006-07	5886.00	201.60	2919.64
2007-08	6569.00	207.30	3168.84
2008-09	6751.00	215.30	3135.62
2009-10	5790.00	214.50	2699.30
2010-11	5839.00	218.10	2677.21

SOURCE: 1990-91 to 2010-11, Reported E & G Actuals  
(Includes tuition waivers and excludes transfers)

United States Consumer Price Index (CPI),  
1982-1984 = 100

**TABLE 29.****SALT LAKE COMMUNITY COLLEGE  
DEPARTMENT OF FINANCIAL AID**

<b>TYPES OF FINANCIAL ASSISTANCE</b>	<b>2000-2001</b>	<b>2010-2011</b>	<b>% INCREASE/ DECREASE</b>
* Pell Grant	\$6,310,096	\$41,528,658	558.13%
* Supplemental Educational Opportunity Grant	\$271,137	\$388,644	43.34%
* Federal Work Study	\$317,134	\$467,189	47.32%
* Perkins Student Loans	\$896,302	\$550,127	-38.62%
* Stafford Direct Loan Program	\$4,028,777	\$32,755,890	713.05%

Estimate: 21,000 students received some form of Aid in 2010-2011.

In 2010-2011, approximately 164,500 student contacts were made through the Financial Aid Department.

In 2010-2011, \$2,351,248 student tuition waivers were granted.

In 2010-2011, \$1,053,416 outside scholarships were disbursed.

In 2010-2011, \$807,140 State Aid was disbursed.

SOURCE: Cristi Millard, Director, Financial Aid

**TABLE/GRAPH 30.**

**SALT LAKE COMMUNITY COLLEGE  
2010-2011 EDUCATION AND GENERAL  
REVENUE SOURCES AND EXPENDITURES**

**REVENUE SOURCES**

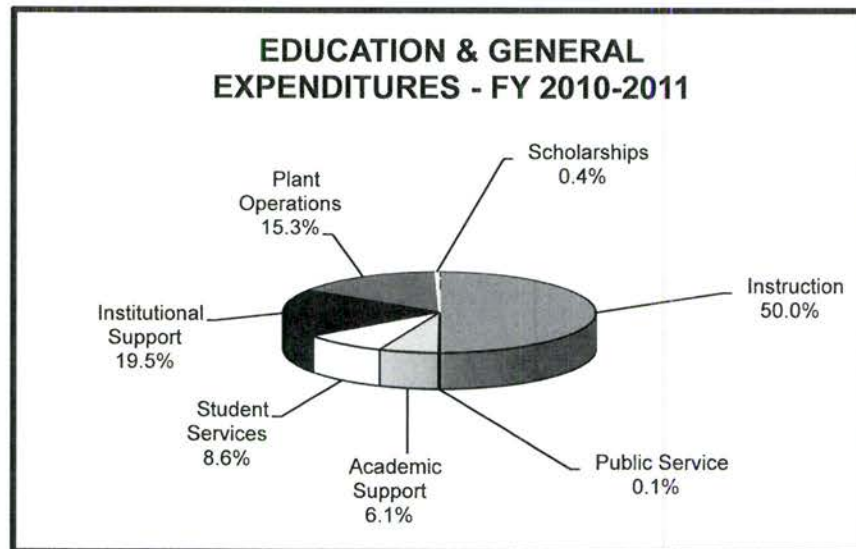
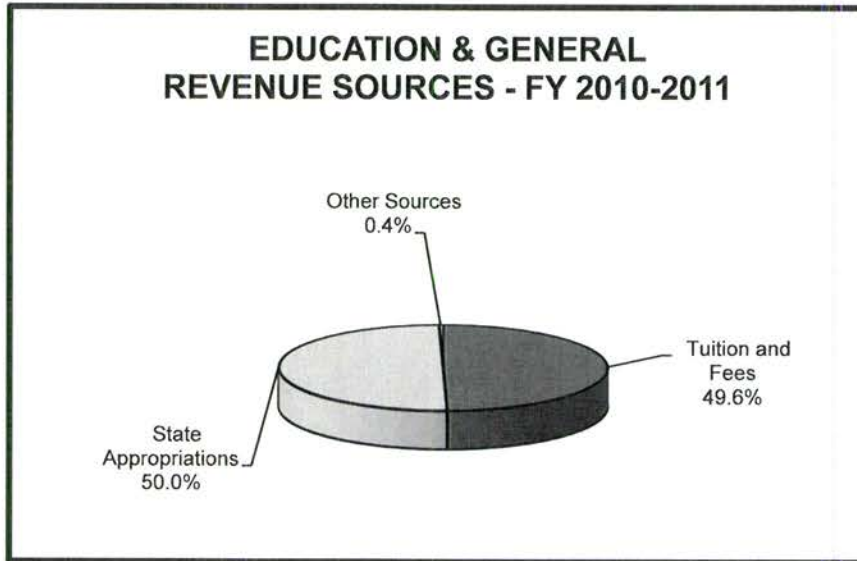
Tuition and Fees	\$ 56,032,095
State Appropriations	56,519,093
Other Sources	389,114

**TOTAL** \$ 112,940,302

**EXPENDITURES**

Instruction	\$ 53,603,786
Public Service	120,452
Academic Support	6,522,406
Student Services	9,208,267
Institutional Support	20,945,314
Plant Operations	16,394,766
Scholarships	429,498

**TOTAL** \$ 107,224,489



**TABLE/GRAPH 31.**

**SALT LAKE COMMUNITY COLLEGE  
2010-2011 TOTAL CURRENT FUNDS  
REVENUE SOURCES AND EXPENDITURES**

**REVENUE SOURCES**

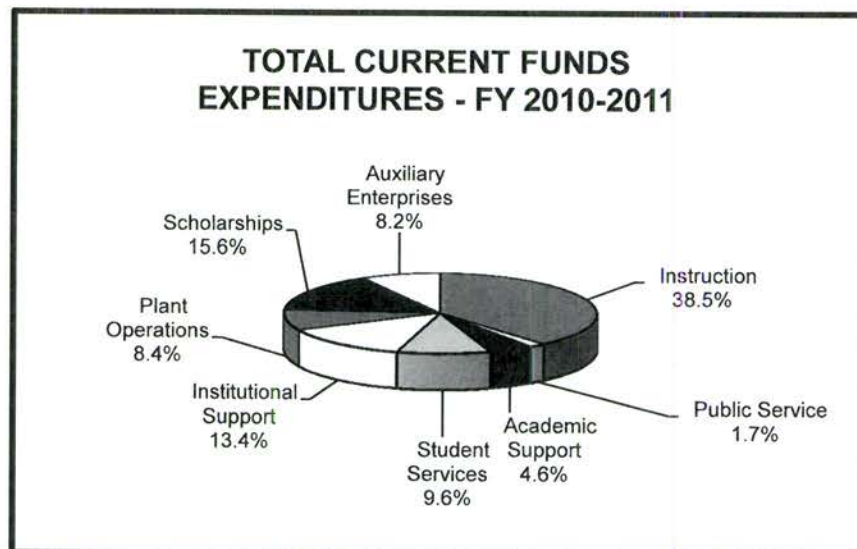
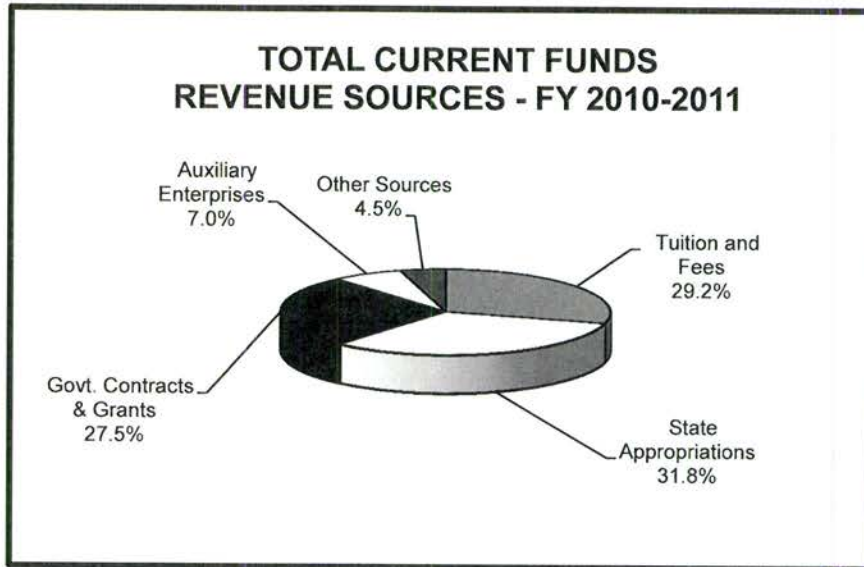
Tuition and Fees	\$ 58,713,692
State Appropriations	63,953,141
Govt. Contracts & Grants	55,401,558
Auxiliary Enterprises	14,129,128
Other Sources	9,114,033

**TOTAL** \$ 201,311,552

**EXPENDITURES**

Instruction	\$ 72,973,190
Public Service	3,204,485
Academic Support	8,669,901
Student Services	18,232,993
Institutional Support	25,425,143
Plant Operations	15,958,624
Scholarships	29,553,306
Auxiliary Enterprises	15,653,044

**TOTAL** \$ 189,670,686



**TAB F.**

**Facilities**

## **TAB F. STEP AHEAD**

### **FACILITIES**

Salt Lake Community College facilities have been modified to meet the needs of growth and a changing community. The College is constructing a new "Center for New Media" at the South City Campus. A new classroom and administrative building is in the planning process; when complete, it will replace the current Nelson Administration Building on the Taylorsville Redwood Campus. The College will soon be opening the Westpointe Center, which will serve the Northwest part of the Salt Lake valley.

#### **Fast Facts**

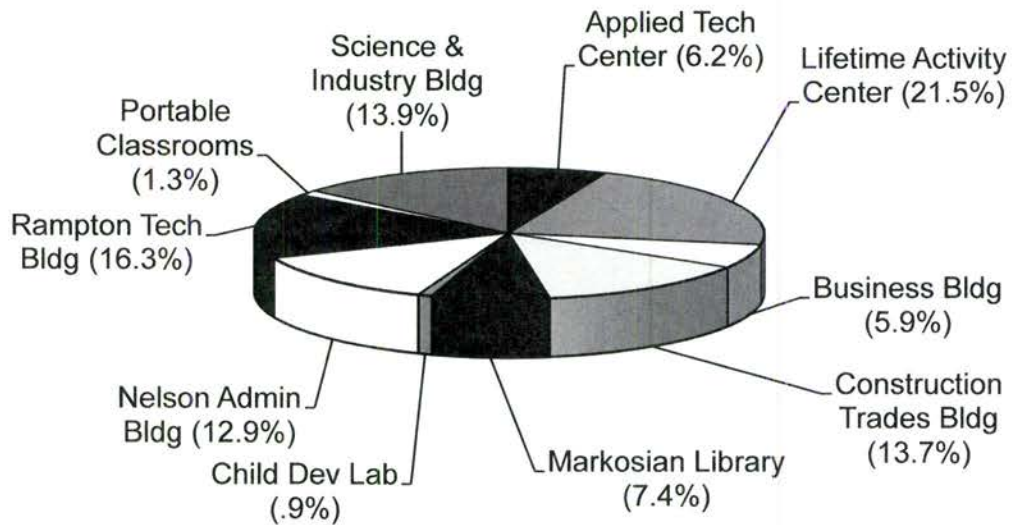
- Taylorsville Redwood Campus -  
Total Square Footage = 1,072,196
- South City Campus -  
Total Square Footage = 387,144
- Miller Campus -  
Total Square Footage = 330,882
- Jordan Campus -  
Total Square Footage = 267,120
- Meadowbrook Campus -  
Total Square Footage = 72,383
- Leased Properties -  
Total Square Footage = 138,503

**TABLE/GRAPH 32.**

**SALT LAKE COMMUNITY COLLEGE  
BUILDING PROFILE  
INSTRUCTIONAL BUILDINGS (TAYLORSVILLE REDWOOD CAMPUS)  
BASED ON GROSS SQUARE FEET**

<b>BUILDING</b>	<b>GROSS SQUARE FEET</b>
Lifetime Activity Center	179,637
Rampton Technology Bldg	135,562
Science & Industry Bldg	116,000
Construction Trades Bldg	114,658
Nelson Administration Bldg	106,817
Markosian Library	62,000
Applied Technology Center	51,905
Business Building	49,500
Portable Classrooms (5-12)	10,678
Child Development Lab	7,510
<b>TOTAL</b>	<b>834,267</b>

**BUILDING PROFILE  
INSTRUCTIONAL BUILDINGS (GROSS SQUARE FEET)**



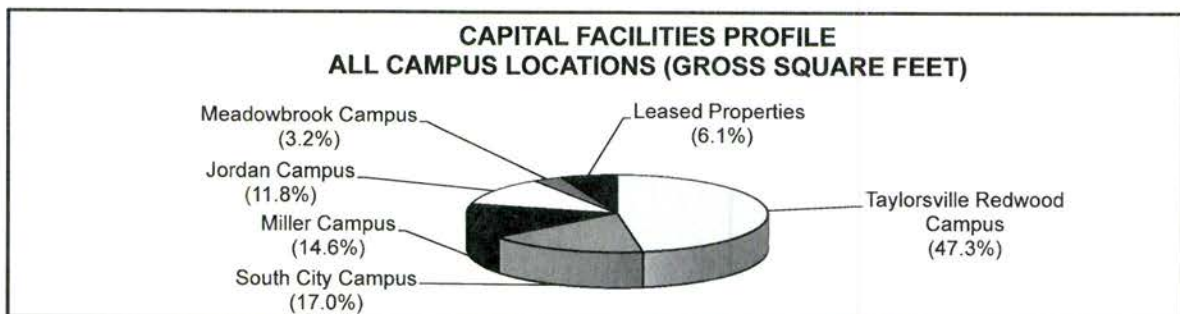


TABLE/GRAPH 33.

**SALT LAKE COMMUNITY COLLEGE  
CAPITAL FACILITIES PROFILE  
ALL CAMPUS LOCATIONS  
BASED ON GROSS SQUARE FEET**

BUILDING	GROSS SQUARE FEET	BUILDING	GROSS SQUARE FEET
<b>TAYLORSVILLE REDWOOD CAMPUS</b>		<b>SOUTH CITY CAMPUS</b>	
Lifetime Activity Center	179,637	Main Building	340,185
Student Center	166,088	Shop Building	24,762
Rampton Technology Bldg	135,562	South City Annex	20,867
Science & Industry Bldg	116,000	Portable Office	1,330
Construction Trades Bldg	114,658	<b>TOTAL</b>	<b>387,144</b>
Nelson Administration Bldg	106,817		
Markosian Library	62,000		
Applied Technology Center	51,905		
Business Building	49,500		
Gundersen Facilities Services Building	16,800		
Facilities Complex 048	13,600		
Facilities Complex 049	9,000		
Institutional Residence	8,343		
Portable Classrooms (8-12)	7,840		
Heating Plant	7,580		
Child Development Lab	7,510		
Physical Plant Storage	3,593		
Portable Offices (1-3)	3,032		
Portable Classrooms (5-7)	2,838		
Facilities Complex 052	2,000		
Alder Amphitheater	1,607		
Professional Lab	1,456		
Facilities Complex 056	1,200		
Facilities Complex 057	1,200		
Athletic Restrooms	750		
Softball Storage (1-3)	520		
Concession/Scorebooth	350		
Tennis Court Storage	268		
Irrigation Pump Building	240		
ATC Hazardous Storage Building	162		
STC Kiosk	100		
STC Ticket Booth	40		
<b>TOTAL</b>	<b>1,072,196</b>		
		<b>LEASED PROPERTIES</b>	
		Westpointe Center	35,887
		Highland Center	31,554
		South City Utility Storage Unit	30,000
		Library Square Center	21,194
		International Aerospace Aviation Education Center	15,563
		Airport Hangers (3)	2,760
		Community Writing Center	1,545
		<b>TOTAL</b>	<b>138,503</b>
		<b>MEADOWBROOK CAMPUS</b>	
		Building A	26,954
		Building C	25,844
		Building B	17,608
		MBC Portable #1 Flight Simulation	1,008
		MBC Portable #2 Flight Program	969
		<b>TOTAL</b>	<b>72,383</b>
		<b>MILLER CAMPUS</b>	
Larry & Gail Miller Public Safety Ed. & Training Cntr.	73,221		
Auto Training Center	48,820		
Miller Free Enterprise Center	48,650		
Corporate Partnership Center	43,750		
Miller Professional Development Center - Karen Gail Miller Conference Center	37,935		
Miller DPS Dormitory	36,870		
Miller Culinary Institute	24,480		
Miller DPS Firing Range	16,166		
Shop Storage Building	990		
<b>TOTAL</b>	<b>330,882</b>		
		<b>JORDAN CAMPUS</b>	
		Jordan Health Science	151,000
		Jordan High Tech Center	89,819
		Student Pavilion	14,055
		Jordan Distribution Center (Includes Tunnel)	11,270
		Ballfield Out Buildings (5)	826
		Pump House	150
		<b>TOTAL</b>	<b>267,120</b>

SOURCE: Kathy Shipley, Access & Resource Manager



**TAB G.**

**Student  
Input**

## **TAB G. STEP AHEAD**

### **STUDENT INPUT**

Salt Lake Community College surveys new students, non-returning students, and graduating students each year to better understand the needs and experiences of those attending SLCC. There is no single or typical student at SLCC. Students vary tremendously in age, in their work and family situations, and even in the reasons they attend the College.

These three surveys provide valuable data that provides important insights into SLCC's dynamic student population. As valuable as these statistics are, though, they only tell part of the story—the student population that completed these surveys possesses more diversity than statistics can describe.

Students list their primary objective in attending SLCC as transferring to a four-year institution. Students list financial demands as their greatest difficulty. Most SLCC students work at least part-time; the majority take less than a full load of college classes. Financial difficulties were the largest problem expressed by non-returning students.

#### **Fast Facts**

- 53% of New Students reported an objective of earning a degree and then transferring
- 41% of Non-returning Students intend to re-enroll within a year
- 90% of SLCC Graduates were satisfied or very satisfied with their experience at SLCC

## **EXPLANATION OF THE STUDENT FOLLOW -UP SYSTEMS**

On a yearly basis Salt Lake Community College (SLCC) conducts anonymous student surveys asking certain kinds of information about the College. Three surveys are conducted annually.

- The NEW STUDENT SURVEY is sent to students enrolled Fall Semester who have not previously attended SLCC.
- The NON-RETURNING STUDENT SURVEY is sent to those students who attended SLCC during Fall Semester but who were not enrolled Spring Semester.
- The GRADUATING STUDENT SURVEY is mailed to students who graduate during the school year.

Data from each survey is entered into a statistical software package, analyzed, and the resulting information is published here. The results that are included present each question that was asked of each of the respondents followed by the resulting percentages.

If you have any questions concerning any facet of the Student Follow-Up system, please contact the Office of Institutional Research at Salt Lake Community College.

**TABLE 34.**

**SALT LAKE COMMUNITY COLLEGE  
2010-2011 NEW STUDENT SURVEY SUMMARY**

ALL NEW FALL SEMESTER STUDENTS  
(1,245 Responses)

**SATISFACTION RESPONSE PERCENTAGES FOR SELECTED  
SLCC PROGRAMS AND SERVICES  
(Percentages are of those using the service.)**

	<u>VERY SATISFIED</u>	<u>SATISFIED</u>	<u>NEUTRAL</u>	<u>DIS- SATISFIED</u>	<u>VERY DIS- SATISFIED</u>
Overall SLCC Experience	44%	47%	7%	1%	1%
Academic Advising	29%	43%	17%	8%	3%
Learning Support/Tutoring	28%	39%	28%	3%	2%
Financial Aid	38%	30%	17%	10%	5%
Campus Program Offerings	32%	46%	20%	1%	1%
Registration	35%	48%	12%	4%	1%
Student Express	34%	43%	19%	3%	1%
Availability of Desired Classes	20%	36%	24%	15%	5%
Convenience of Campus Locations	43%	40%	12%	4%	1%
Class Sizes	50%	41%	7%	1%	1%
Quality of Instruction	43%	40%	13%	3%	1%
Friendliness of Faculty/Response to Need	46%	39%	12%	2%	1%

**TABLE 34.**

**SALT LAKE COMMUNITY COLLEGE  
2010-2011 NEW STUDENT SURVEY SUMMARY (Continued)**

**PRIMARY EDUCATIONAL OBJECTIVE IN  
ATTENDING**

53%	Earn degree and transfer
24%	Earn degree and work in that field
12%	Take courses/transfer before degree
5%	Other
3%	Upgrade skills in present job
3%	Take some courses and get a new job

**TOTAL SEMESTERS (including this one)  
PLANNING TO ATTEND SLCC?**

4%	1
12%	2
9%	3
27%	4
9%	5
14%	6
2%	7
20%	8 and above
3%	No Response

**WHAT IS YOUR CURRENT CREDIT HOUR  
ENROLLMENT?**

19%	1 - 5
37%	6 - 11
32%	12 - 14
10%	15+
2%	No Response

**WHAT IS YOUR HIGHEST DEGREE  
EARNED?**

2%	Less than HS Diploma
73%	HS Diploma/GED
5%	One-year Certificate of Completion
5%	AS/AAS/APE/AA
6%	BS/BA
4%	Graduate+
5%	No Response

**HOW MANY HOURS A WEEK WERE  
YOU EMPLOYED WHILE ALSO  
ATTENDING COLLEGE?**

29%	None
17%	1 – 19 hours
28%	20 – 39 hours
14%	40 hours
9%	41+
3%	No Response

**CURRENTLY ENROLLED FOR CREDIT  
AT ANOTHER COLLEGE IN ADDITION  
TO SLCC?**

94%	No
3%	Yes
3%	No Response

**WHAT IS YOUR ETHNIC ORIGIN?**

1%	American Indian/Alaskan Native
4%	Asian/Pacific Islander
2%	Black/Non-Hispanic
10%	Hispanic
76%	White/Non-Hispanic
4%	Other
3%	No Response

**WHAT IS YOUR AGE GROUP?**

2%	Under 18
56%	18 - 24
22%	25 - 34
18%	35 & over
2%	No Response

**ARE YOU?**

39%	Male
58%	Female
3%	No Response

TABLE 35.

**SALT LAKE COMMUNITY COLLEGE**  
**2010-2011 STUDENT FOLLOW-UP SURVEY SUMMARY (NON-RETURNING)**  
*Students who attended SLCC Fall Semester 2010,*  
*but did not return Spring Semester 2011*

ALL NON-RETURNING STUDENTS  
(1,000 Responses)

**What was your primary objective in attending SLCC?**

- 41% Earn a degree/transfer to a 4 year institution
- 19% Take courses/transfer before earning a degree at SLCC
- 25% Earn a degree/certificate at SLCC and work in that field
- 4% Take some courses to upgrade skills in present job
- 3% Take some courses and apply for a new job
- 8% Other

**Why did I not re-enroll at SLCC in the Spring Semester?**

- 21% Financial Reasons
- 12% Personal problems
- 9% Completed the courses I wanted
- 14% Transferred
- 4% Military/Church Mission
- 6% Graduated
- 4% Dissatisfied with SLCC
- 25% Other
- 5% No Response

**How many semesters did you complete at SLCC?**

- 23% 1
- 14% 2
- 17% 3
- 10% 4
- 8% 5
- 6% 6
- 5% 7
- 14% 8 and above
- 3% No Response

**What was your total general grade point average?**

- 5% Less than 2.00
- 16% 2.00 - 2.99
- 58% 3.00 - 4.00
- 17% Do Not Know
- 4% No Response

**Do you intend to return and re-enroll at SLCC?**

- 41% Yes, within a year
- 18% Yes, but don't know exactly when
- 17% Uncertain about whether or not
- 19% Do not plan to return
- 5% No Response

**What was your credit hour enrollment last semester?**

- 39% 1 - 5 credit hours
- 37% 6 - 11 credit hours
- 16% 12 - 14 credit hours
- 3% 15+ credit hours
- 5% No Response

**What is your age group?**

- 1% Under 18
- 41% 18 - 24
- 32% 25 - 34
- 24% 35 & over
- 2% No Response

**How many hours do you work in a week?**

- 15% None
- 9% 1 - 19
- 27% 20 - 39
- 24% 40
- 21% 41 +
- 4% No Response

**Are you?**

- 38% Male
- 59% Female
- 3% No Response

**TABLE 35.**

**SALT LAKE COMMUNITY COLLEGE  
2010-2011 STUDENT FOLLOW-UP SURVEY SUMMARY (NON-RETURNING)  
(Continued)**

**While you were attending SLCC, were you affected by any of the following situations?**

	<u>Not a Problem</u>	<u>Minor Problem</u>	<u>Problem</u>	<u>Major Problem</u>	<u>No Response</u>
I experienced financial difficulties.	38%	26%	16%	18%	2%
Family responsibilities made it difficult to attend.	57%	18%	12%	11%	2%
Attendance conflicted with my work schedule.	56%	24%	11%	7%	2%
Classes were not available when I needed them.	49%	25%	14%	9%	3%
Courses were not challenging enough.	81%	11%	3%	2%	3%
I found the course work too difficult.	76%	15%	4%	2%	3%
I couldn't decide on a major/field of study.	75%	13%	6%	3%	3%
I experienced health or other personal problems.	73%	8%	7%	9%	3%
I felt out of place at SLCC.	83%	9%	4%	1%	3%
I could not find time for classes and assignments.	66%	17%	11%	4%	2%
I lacked motivation to study and complete assignments.	69%	19%	7%	3%	2%
Taking only a few courses at a time is slow and discouraging.	69%	17%	9%	3%	2%

**Evaluate the areas that apply to you (Percentages are those using the services.)**

	<u>Very Satisfied</u>	<u>Satisfied</u>	<u>Neutral</u>	<u>Dis-satisfied</u>	<u>Very Dis-satisfied</u>
Overall SLCC experience	32%	48%	15%	4%	1%
Academic Advising	16%	33%	34%	12%	5%
Quality of Instruction	25%	48%	19%	6%	2%
Career Information	15%	31%	44%	8%	2%
Timely Feedback from Instructors	27%	45%	19%	6%	3%
Instructor Availability Outside of Class	25%	38%	29%	6%	2%
Availability of Classes at Preferred Campus	18%	33%	25%	19%	5%
Distance Education Offerings	16%	24%	55%	4%	1%



**TABLE 36.**

**SALT LAKE COMMUNITY COLLEGE  
2010-2011 GRADUATING STUDENT SURVEY**

(590 Responses)

(More than one response accepted.)

**What was your primary objective in attending SLCC?**

- 53% University/College transfer credit
- 23% Preparation for a job to be obtained
- 12% Try to get a college degree as quickly as possible
- 26% Other

**What are your plans after graduation?**

- 52% Begin in Fall 2011 at a 4 year college/university
- 24% Transfer to a 4 year college/university at some point in time in the future
- 25% Try to obtain a job in the field I studied at SLCC
- 6% Obtain a job in any field now that I have a college degree
- 15% Other

**Which statement best describes your feelings about your educational experience at SLCC?**

- 41% Very Satisfied
- 49% Satisfied
- 7% Neutral
- 2% Disappointed
- 1% Very Disappointed

**What is your age group?**

- 36% 24 years and under
- 41% 25 - 34
- 12% 35 - 44
- 11% 45 and over

**Are you?**

- 33% Male
- 66% Female
- 1% No Response

**At the present time, are you married?**

- 52% Yes
- 46% Satisfactory
- 2% No Response

**Rate the college services below according to how well they fulfilled your individual needs. (Percentages are those using the services.)**

	<u>Very Poor</u>	<u>Poor</u>	<u>Avg</u>	<u>Good</u>	<u>Very Good</u>
Academic/Career Advising	6%	11%	25%	35%	23%
Student Express		2%	27%	50%	21%
Child Care Center	1%	4%	35%	34%	26%
Bookstore (not including textbook prices)	1%	2%	24%	49%	24%
Computer Labs		2%	17%	46%	35%
Disability Resource Cntr	1%	3%	26%	34%	36%
Financial Aid	3%	4%	17%	37%	39%
Library Services		1%	15%	50%	34%
Library Web Resources	1%	5%	19%	44%	31%
Student Employment	3%	10%	25%	37%	25%
Tutor/Learning Center	1%	6%	21%	36%	36%
Veteran's Services	1%	1%	28%	40%	30%
Registration		3%	19%	48%	30%

**Rate the instructional services according to how well they fulfilled your individual needs.**

	<u>Very Poor</u>	<u>Poor</u>	<u>Avg</u>	<u>Good</u>	<u>Very Good</u>	<u>N/A</u>
Physical Classroom	1%	5%	28%	42%	22%	2%
Typical Class Size		1%	18%	42%	37%	2%
Location of Classes		2%	15%	51%	31%	1%
Availability of Classes to Choose From	1%	9%	26%	39%	23%	2%
Instructor's Concern for Student Needs	1%	5%	23%	44%	25%	2%
Grading/Testing		3%	22%	51%	22%	2%
Price of Textbooks	13%	22%	42%	17%	4%	2%
Overall Quality of Instruction	1%	3%	18%	51%	26%	1%
Instructor's Knowledge of Subject		2%	12%	43%	41%	2%

**TAB H.**

**Non-Credit**

## **TAB H. STEP AHEAD**

### **NON-CREDIT ACTIVITY**

The School of Applied Technology provides quality non-credit vocational/technical training for qualifying students. The School provided over 611,773 hours of scheduled instruction in 2010-2011.

The School of Professional and Economic Development also provides quality instruction for businesses through workshops and specialized training programs.

#### **Fast Facts**

- (SAT) 2010-2011 Hours of Training = 611,773
- (SAT) 2010-2011 Student FTE's = 679.75
- (SAT) Non-white Population = 43.1%
- (School of Professional and Economic Development) 2010-2011 Non-Credit Student Enrollment = 10,957

# Salt Lake Community College School of Applied Technology

## Mission

The School of Applied Technology, within the Salt Lake Community College, provides quality career and technical education in a flexible, competency-based format to meet the needs of students desiring low-cost training in high demand, high wage, and high skill job fields. Programs are responsive to business and industry requirements resulting in appropriate license, certification, or evidence of completion, articulating, where appropriate, with credit career and technical education courses within the College.

## Operating Characteristics

<b>Open-entry / Open-exit</b>	Students enter when they are ready and exit when they are finished
<b>Competency-based</b>	Students progress as they demonstrate skills and knowledge
<b>Low Cost</b>	Tuition based on \$1.75 per class hour – with minimal fees and books
<b>Secondary Students</b>	High school students enroll tuition free and may earn high school credit
<b>Flexible Start Date</b>	Programs available year-round – not tied to traditional semesters or school year
<b>Flexible Scheduling</b>	Flexible, individualized scheduling or students may enter a cohort
<b>Program Options</b>	Students select from more than 34 certificate options
<b>Locations</b>	Eight sites in the Salt Lake Valley, some programs offered at more than one location
<b>Partnerships with Industry</b>	Every program has a Program Advisory Committee to assist and support
<b>Qualified Faculty</b>	Faculty are hired for their technical skills and their ability to work with students
<b>Sponsored</b>	Sponsorships - most programs are VA eligible and many are PELL eligible
<b>Basic Skills Available</b>	Adult Basic Education, ESL, GED test prep, Learning Lab

TABLE 37.

**SCHOOL OF APPLIED TECHNOLOGY  
HEADCOUNT, SCHEDULED HOURS, AND FTE ENROLLMENT  
2010-2011**

(Includes Carry-Ins From Fiscal Year to Fiscal Year)

Department Program/Course	HEADCOUNT	SCHEDULED HRS	FTE'S
<b>Adult Basic Education</b>			
Adult Basic Education	107	16,003.44	17.78
Adult Basic Skills - Math	6	596.00	0.66
Adult Basic Skills - Reading	9	1,355.51	1.51
Adult Basic Skills - Both	90	14,217.00	15.80
ASVAB Test Preparation	7	1,202.00	1.34
GED Test Preparation	62	9,851.00	10.95
<b>Air Conditioning, Heating and Refrigeration</b>			
Air Conditioning, Heating and Refrigeration	120	33,919.00	37.69
<b>Automotive and Related Technologies</b>			
Auto General Service Tech	6	1,173.00	1.30
Automotive Technician	33	8,159.64	9.07
Automotive Undercar Technician	5	1,770.66	1.97
<b>Computer Technology</b>			
Computer Applications	4	1,110.00	1.23
Computer Learning Center	74	4,237.00	4.71
Computer Support Specialist (A+)	229	37,209.58	41.34
Computer Upgrade & Repair	7	778.83	0.87
Graphic Designer	11	2,281.87	2.54
Internet Technician Networking	4	1,052.21	1.17
Linux Network Administrator	1	91.00	0.10
Media Design Technology	37	9,001.86	10.00
Network Administrator	20	4,707.73	5.23
Network Administrator (MCSA)	5	1,091.15	1.21
Network Engineer (MCSE)	11	3,033.72	3.37
Network Engineer	59	15,295.49	16.99
Network Infrastructure Technician	22	3,802.03	4.22
Networking Technician (Net+)	4	985.00	1.09
Web Site Designer	16	3,421.25	3.80
Web Programmer	15	3,943.00	4.38
<b>Diesel Systems Technology</b>			
Heavy Duty Diesel Maintenance	8	1,288.00	1.43
Heavy Duty Diesel Tech	20	4,673.12	5.19
<b>Electronics</b>			
Electromechanical Assembly Technician	21	3,078.85	3.42
Electronics Assembly Technician	23	3,401.00	3.78
Electronics Comm Technician	18	5,840.00	6.49
Electronics Engineer Technician	5	944.00	1.05
Electronics Technician	64	19,312.55	21.46
<b>English as a Second Language (ESL)</b>			
English as a Second Language (ESL)	463	102,749.54	114.17
<b>Health Care Industry</b>			
Basic Health Records	14	4,359.54	4.84
Central Sterilization Technician	1	255.00	0.28
Certified Nursing Assistant	263	28,067.31	31.19
Clinical Medical Coding	154	33,090.37	36.77
ECG Technician	4	935.34	1.04
Health Information Specialist	12	2,947.00	3.27
Health Unit Clerk/Coordinator	34	3,672.32	4.08
Medical Coding and Billing	214	56,961.45	63.29
Medical Office Laboratory Technician	18	2,974.94	3.31
Medical Office Administrator	16	3,960.46	4.40
Nutrition Assistant	5	107.00	0.12
Phlebotomy Technician	14	2,991.50	3.32
Pharmacy Technician	48	14,336.50	15.93
<b>Machinist</b>			
Machinist/Manual Machinist	36	7,234.00	8.04
<b>Office Information Systems</b>			
Accounting Clerk	89	18,135.12	20.15
Administrative Office Specialist	50	4,561.13	5.07
Administrative Clerk	4	1,069.96	1.19
Business Administrative Support I	21	3,590.57	3.99
Business Administrative Support II	11	3,739.41	4.15
Customer Service	1	265.53	0.30
Customer Service/Receptionist	21	2,558.84	2.84
Front Office Support	5	929.13	1.03
Office Clerk	25	5,407.29	6.01
<b>Professional Truck Driving</b>			
CDL Learners Permit	19	2,831.00	3.15
Professional Truck Driving, 120, 160, and 280 hr	89	19,087.90	21.21
<b>Welding</b>			
Welding	69	22,875.58	25.42
<b>Other</b>			
Fork Lift Training	37	283.00	0.31
Fundamental Lab Science	8	1,556.00	1.73
Fundamental Skills	191	4,649.65	5.17
Undecided	2	91.00	0.10
Youth Building Construction	61	36,672.75	40.75
<b>TOTALS</b>		<b>611,772.62</b>	<b>679.75</b>

TABLE 38.

**SCHOOL OF APPLIED TECHNOLOGY  
STUDENT INFORMATION JULY 1, 2010 THROUGH JUNE 30, 2011  
(Unduplicated Headcount)**

	FEMALE	MALE	GENDER NOT REPORTED	TOTAL NUMBER	% OF TOTAL
<b>ETHNICITY</b>					
Caucasian	646	732	3	1381	45.8%
Hispanic	444	362	2	808	26.7%
Asian	115	109		224	7.4%
Black	74	82		156	5.2%
Native American	38	34		72	2.4%
Pacific Islander	23	19		42	1.4%
Two or more races	4	1		5	0.2%
Non Resident Alien	46	45		91	3.0%
Unknown	118	119	5	242	7.9%
<b>Totals</b>	<b>1508</b>	<b>1503</b>	<b>10</b>	<b>3021</b>	<b>100.0%</b>
<b>TRAINING STATUS</b>					
Completed Training Objectives	577	507		1084	
Left Prior to Completing Training Objectives	511	592	3	1106	
Continuing Training/Education	420	404	7	831	
	<b>1508</b>	<b>1503</b>	<b>10</b>	<b>3021</b>	
<b>STUDENTS RECEIVING ASSISTANCE</b>					
<b>3,021 Surveyed</b>					
Supplemental Security Income	12	9		21	0.7%
Food Stamps	93	74	1	168	5.6%
<b>Totals</b>	<b>105</b>	<b>83</b>	<b>1</b>	<b>189</b>	<b>5.0%</b>
<b>3,021 Surveyed</b>					
<b>(Students can be in more than one category)</b>					
Displaced Homemakers	68	46		114	3.8%
Limited English Proficiency	348	282	1	631	20.9%
Economically Disadvantaged	473	462	1	936	31.0%
Single Heads of Household	142	25		167	5.5%
<b>STUDENTS AVERAGE AGE</b>					
<b>Average</b>	<b>34</b>	<b>33</b>	<b>35</b>		

**TABLE 39.**

**SCHOOL OF APPLIED TECHNOLOGY  
DISTRIBUTION OF GRADUATES  
BY PROGRAM AND BY GENDER**

<b>PROGRAM AREA</b>	<b>MALE 2010-2011</b>	<b>FEMALE 2010-2011</b>	<b>TOTAL 2010-2011</b>
Accounting Clerk	3	13	16
AC/Refrigeration/Heating	27		27
Admin Office Specialist		1	1
Administrative Clerk		2	2
Basic Health Records		9	9
Business Admin Support I	2	1	3
Business Admin Support II	1	1	2
Certified Nurse Assistant	61	157	218
Clinical Medical Assisting	1	11	12
Computer Applications	1		1
Computer Support Spec. A+	15	4	19
Computer Upgrade & Repair Tech	2		2
Customer Service/Receptionist	2	3	5
ECG Technician		1	1
Electromechanic Assembly Tech	4	1	5
Electronics Assem. Technology	4	3	7
Electronics Technician	4		4
Health Unit Clerk/Coordinator	1	15	16
Heavy Duty Diesel Technician	4		4
Machinist	8		8
Manual Machinist	3		3
Media Design Technology	2	1	3
Medical Coding and Billing	6	51	57
Medical Office Laboratory Tech	2	7	9
Network Administrator	2		2
Network Administrator (MCSA)		1	1
Network Engineer	1		1
Network Infrastructure Tech	1		1
Networking Technician (Net+)	1		1
Office Clerk	2	9	11
Pharmacy Technician	13	23	36
Phlebotomy Technician	2	5	7
Professional Truck Driving	65	4	69
Web Programmer	1		1
Web Site Designer	1		1
Welding	13	1	14
Youth Building Construction	16	8	24
<b>SAT TOTALS</b>	<b>271</b>	<b>332</b>	<b>603</b>

NOTE: Includes both Certificates of Completion and Certificates of Proficiency

SOURCE: SAT Cognos Report

**TABLE/GRAPH 40.**

**SALT LAKE COMMUNITY COLLEGE  
SCHOOL OF APPLIED TECHNOLOGY  
2010-2011 TOTAL REVENUE SOURCES AND EXPENDITURES**

**REVENUE SOURCES**

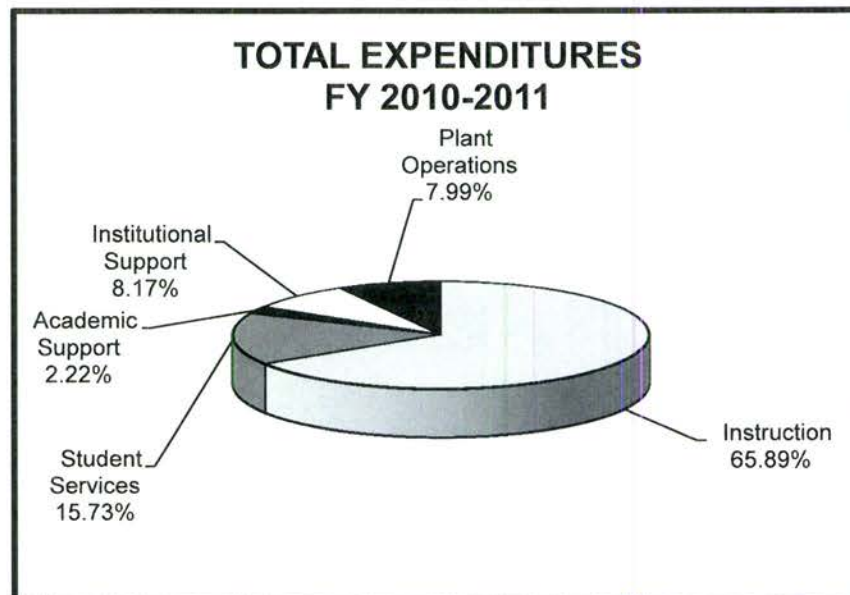
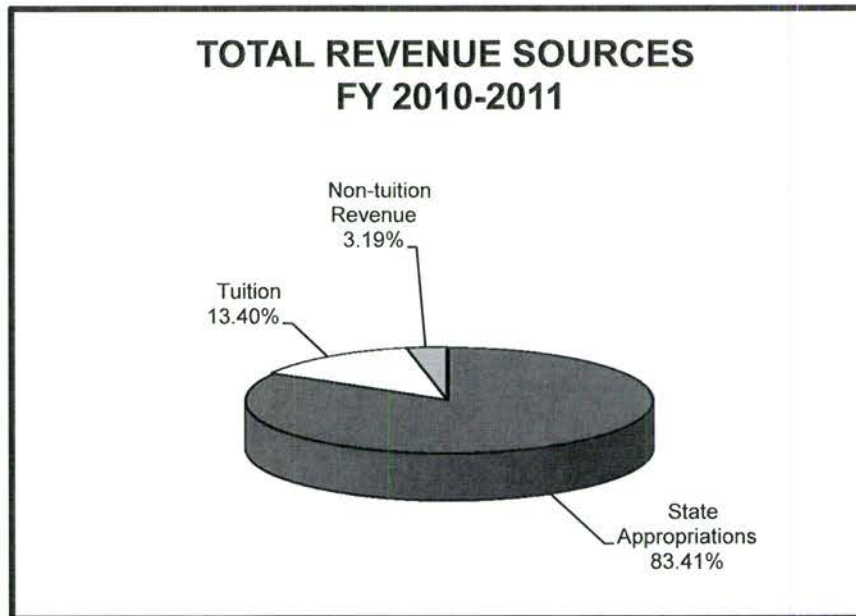
State Appropriations	\$	5,832,100
Tuition		936,782
Non-tuition Revenue		223,152

**EXPENDITURES**

Instruction	\$	4,652,845
Student Services		1,111,123
Academic Support		156,955
Institutional Support		577,282
Plant Operations		564,505

**TOTAL** \$ 6,992,034

**TOTAL** \$ 7,062,710





**TABLE 41.**  
**SALT LAKE COMMUNITY COLLEGE**  
**SCHOOL OF PROFESSIONAL AND ECONOMIC DEVELOPMENT**

**NON-CREDIT STUDENT ENROLLMENT**

PROGRAM OR COURSE	2006-07	2007-08	2008-09	2009-10	2010-11
<b>NON-CREDIT BY PROGRAM SUBJECT CODE</b>					
CEAB - Accelerated Business Program Fee					140
CEAL - ARL		126	157	143	109
CEAS - ASL	44	206	159	271	60
CEAT - ATE - CTE	843	167	37	27	30
CEBC - Small Business Center Training	532	189	223	527	528
CECD - CAD	62	60	49	35	94
CECT - Contractor's License Renewal	101	29	418	661	46
CECW - Computer Workshops	1,012	917	597	561	662
CEDM - Digital Media				3	29
CEEI - Encore Institute				7	164
CEEU - CEU's				59	87
CEGA - Green Academy				5	
CEGN - Genealogy				2	11
CEHI - Health Information Technology					97
CEHS - Human Services				6	17
CEHW - Health Wellness				24	6
CEHZ - Alternative Energy Sources	131	110	120	216	179
CEIB - International Business	12	10	3	1	3
CEIP - Motorcycle Safety	697	990	1,130	831	562
CEIP - Public Safety	123	150	203	246	259
CELN - Lineman				16	
CELS - Library Information Science					2
CEMG - Ed-2-Go				30	29
CEMS - Notary Training	181	229	254	207	94
CEPD - Professional Development			122	180	332
CEPW - Professional Workshops (Summit)			57	47	29
CERA - Real Estate	37	40	4		
CESB - Small Bus Dev Ctr (State)				20	12
CESP - State Energy Sector Partnership Grant					320
CESU - Sustainability			29	1	4
CETG - Ed to Go/Computer Training	155	192	331	292	470
CETR - Transportation Training UDOT/UTA/UPF	1,686	1,772	3,419	1,265	1,096
CETS - Health Info Tech Support					53
CEWB - Women's Business Institute			67	173	145
<b>CEST - STIT</b>	<b>613</b>	<b>672</b>	<b>739</b>	<b>853</b>	<b>481</b>
<b>CESS - STIT Self Support</b>				<b>9</b>	<b>447</b>
<b>CUSTOM FIT TRAINING</b>	<b>1,755</b>	<b>1,129</b>	<b>1,514</b>	<b>1,277</b>	<b>1,774</b>
<b>NON-CREDIT NON PROGRAM SUBJECT CODE</b>					
Program Events				1,137	1,205
TSA Training			27		
Small Business Assistance	2,706	912	388	599	824
Salt Lake Airport Training	681		159		
Ford Training Center (Outreach)	401	563	600	427	557
<b>NON-CREDIT ACADEMIC OFFERINGS</b>		<b>27</b>	<b>14</b>		
<b>COMBINED TOTALS</b>	<b>11,772</b>	<b>8,490</b>	<b>10,820</b>	<b>10,158</b>	<b>10,957</b>

NOTE: Some duplication may occur within Program Subject Code.

# SLCC LOCATIONS

**Canyons Technology Education Center (CTEC)**  
 (high school students/concurrent enrollment)  
 825 E. 9085 South, Sandy, Utah 84094  
 (801) 826-6600

**Community Writing Center (CWC)**  
 in Library Square  
 210 East 400 South  
 Salt Lake City, Utah 84111  
 (801) 957-2192

**Granite Technical Institute (GTI)**  
 (high school students/concurrent enrollment)  
 2500 South State Street  
 Salt Lake City, Utah 84106  
 (385) 646-4350

**Highland Center (HLDC)**  
 3760 South Highland Drive  
 Salt Lake City, Utah 84110  
 (801) 957-2100

**International Aerospace/Aviation  
 Education Center (AP)**  
 551 North 2200 West  
 Salt Lake City, Utah 84116  
 (801) 957-2050

**Jordan Campus (JC)**  
 3491 West Wights Fort Road  
 West Jordan, Utah 84088-8818  
 (801) 957-2600

**Jordan Applied Technology Centers (JEDC)**  
 (high school students/concurrent enrollment)  
 9301 S. Wights Fort Road, West Jordan, Utah 84088  
 (801) 256-5900

**Library Square Center (LSC)**  
 231 East 400 South  
 Salt Lake City, Utah 84111  
 (801) 957-2000

**Meadowbrook Campus (MBC)**  
 250 West 3900 South  
 Salt Lake City, Utah 84107  
 (801) 957-5821

**Miller Campus (LHM)**  
 9750 South 300 West  
 Sandy, Utah 84070  
 (801) 957-5200

**SLCC Online**  
[www.slcc.edu/online](http://www.slcc.edu/online)  
 (801) 957-4406

**South City Campus (SCC)**  
 1575 South State Street  
 Salt Lake City, Utah 84115  
 (801) 957-4111

**Taylorville Redwood Campus (RRC)**  
 4600 South Redwood Road  
 Salt Lake City, Utah 84123  
 P.O. Box 30808  
 Salt Lake City, Utah 84130-0808  
 (801) 957-4111

**Westpointe Center (WPC)**  
 2150 West Dauntless Avenue  
 Salt Lake City, Utah 84116  
 (801) 957-4073

